

2 Identification

⇒ "2.1 Engine number/engine data", page 4

2.1 Engine number/engine data

Vehicle data sticker on toothed belt guard:

There is a sticker on the upper toothed belt guard. It shows various engine data.

Only this vehicle data sticker contains the applicable version data for the respective engine. This data is important for commissioning.

Each engine has an individual vehicle data sticker. This vehicle data sticker must not be replaced by another vehicle data sticker. The data is not applicable for any other engine.

For new engines, the new vehicle data sticker is attached to the new toothed belt guard.

If a new engine is installed, make sure that only the upper toothed belt guard which was supplied with the engine is installed.

For new engines, compare the data on the vehicle data sticker with the data on the engine identity card. The specified data must match.

Do not replace a toothed belt guard by a new one if it cannot be assured that the vehicle data sticker matches the respective engine.

- 1 - Crankshaft version data
- 2 - Engine number
- 3 - Engine code

Crankshaft version data -1-:

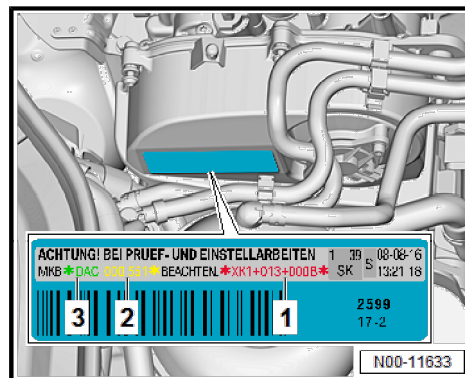
- ◆ Serves as version documentation, and is used for commissioning.
- ◆ For some components, the version data must be transferred to the engine control unit after they have been renewed → Vehicle diagnostic tester.
- ◆ This is described in the procedures for the relevant components.

Engine code -3-:

- ◆ The engine code is specified on the vehicle data sticker, the type plate and on the crankcase above the gearbox.
- ◆ The first 3 digits refer to the mechanical configuration of the engine.
- ◆ The fourth digit indicates the output and the torque of the engine.

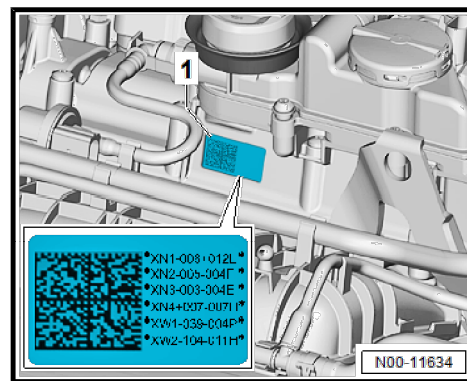
Engine number -2- and -3-:

- ◆ The engine number consists of up to 9 characters (alphanumeric).
- ◆ The first 3 characters are the "engine code".
- ◆ The subsequent 6 characters are the "serial number".
- ◆ If more than 999,999 engines were produced with the same code letters, the first of the six digits is replaced by a letter.



Vehicle data sticker on camshaft housing:

- ◆ Serves as version documentation, and is used for commissioning.
- ◆ The version data must be transferred to the engine control unit after components have been renewed ⇒ Vehicle diagnostic tester.
- ◆ This is described in the procedures for the relevant components.
- ◆ Each engine has an individual vehicle data sticker. The data is not applicable for any other engine.
- ◆ On the left side, the data matrix code is specified. This data is read ⇒ Vehicle diagnostic tester.
- ◆ On the right side, an alphanumeric version code is indicated. It is used for entering the version data manually during commissioning ⇒ Vehicle diagnostic tester.
- ◆ The specified values are measurement data for the components.



XN1 - Cams of cylinder no. 1

XN2 - Cams of cylinder no. 2

XN3 - Cams of cylinder no. 3

XN4 - Cams of cylinder no. 4

XW1 - Sender wheel of inlet camshaft

XW2 - Sender wheel of exhaust camshaft

Engine specifications:

Engine code	DADA	DACA	DPBA	DPCA
Exhaust emission standard	EU6	EU6	EU6	EU6
Displacement cm ³	1495	1495	1495	1495
Power kW at rpm	110/5000	96/5000	96/5000	110/5000
Engine torque N m at rpm	250/1500-3500	200/1400 to 4000	200/1400 to 4000	250/1500-3500
Bore Ø mm	74.5	74.5	74.5	74.5
Stroke mm	85.7	85.7	85.7	85.7
Compression ratio	10.5	12.5 – Miller cycle	12.5 – Miller cycle	10.5
Valves per cylinder	4	4	4	4
Charging	Turbocharger (traditional)	Turbocharger (variable turbocharger geometry)	Turbocharger (variable turbocharger geometry)	Turbocharger (wastegate)

Engine code	DADA	DACA	DPBA	DPCA
RON min.	95 unleaded (E10)	95 unleaded (E10)	95 unleaded (E10)	95 unleaded (E10)
Injection, ignition system	Bosch Motronic MG 1	Bosch Motronic MG 1	Bosch Motronic MG 1	Bosch Motronic MG 1
Firing order	1-3-4-2	1-3-4-2	1-3-4-2	1-3-4-2



SEAT

Protected by copyright. Copying for private or commercial purposes, in part or in whole, is not permitted unless authorised by SEAT S.A. SEAT S.A does not guarantee or accept any liability with respect to the correctness of information in this document. Copyright by SEAT S.A.

