

21.04.2025

Copyright VW AG

Technical Service Handbook

ElsaPro transaction no.:

DMS order no.:

VIN: VSSZZZKLZMR065995

Model year: 2021

Sales code: KL15EX

Model description: LEON 1.5 TSIFR 5d110 DS9M6

Engine code: DPCA

Gearbox code: USE

Registration number:

Final drive code:

Username: erwin

Service advisor name: erwin

#### Basic filtering of vehicle description

Brand	Model year	Sales model	Engine code	Gearbox code	Final drive code
S	2021	KL% - LEON (KL)	%	%	%

#### Technical product information

4545, KL, KU, KM7: Irregular operation of the electric parking brake with the Autohold or EPB activated

Transaction No.: 2063188/6

Release date 20-Jul-2023

## Customer statement / workshop findings

### Customer statement:

- When starting the vehicle with the Autohold or EPB activated, the electric handbrake is slow to release or it does not release (the electric handbrake is still activated).

### Workshop findings:

- The reported problem is reproducible.
- No related event entry exists.

### Document history:

Item no./Revision no.:	Modification type:
2063188/6	Modification in: <ul style="list-style-type: none"><li>Heading data.</li><li>Warranty accounting instructions.</li></ul>



NOTICE

The content of this table will not change if the reason for the following revision is only due to changes in the TPI heading data.

## Technical background

Software adaptation in the brake electronics control unit (diagnosis address: 0003).

## Production change

---

## Measure

Should the customer make a claim, once the anomaly has been confirmed, the repair procedure below must be followed:



### NOTICE

Please see the diagnostics equipment in order to carry out the procedures correctly.

### Software update in the brake electronics control unit.

Update the brake electronics control unit software (diagnosis address: 0003) according to the following table:



### NOTICE

The software versions included in the annex table correspond to the versions in force at the time that this TPI is published. There may be some discrepancies due to possible later updates. The version indicated in the column "New software version" or later must be used.

Original part reference	Original software version	New part reference	New software version	SVM test code
5WA 614 517 BC	0125	5WA 614 517 BL	0134 or higher	356A
5WA 614 517 BE	0127			
5WA 614 517 BG	0129			
5WA 614 517 BG	0130			
5WA 614 517 BJ	0131			
5WA 614 517 BL	0133			
5WA 614 517 BD	0125	5WA 614 517 BM		
5WA 614 517 BF	0127			
5WA 614 517 BH	0129			
5WA 614 517 BH	0130			
5WA 614 517 BK	0131			

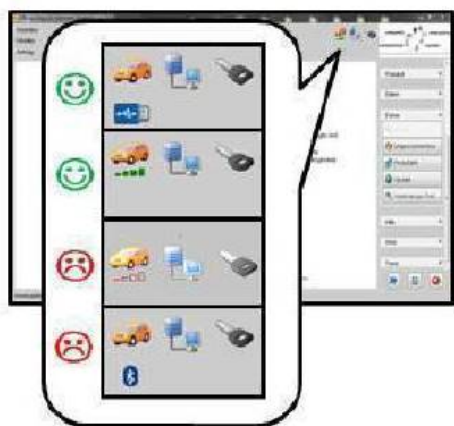
**NOTICE**

Before updating the software, please bear in mind and follow the points below:

- **Offboard Diagnostic Information System (ODIS):** The diagnostics equipment must be updated using the latest available version. There should be no pending update.
- Connect a SEAT-approved battery charger to ensure the power supply of the vehicle.
- Disconnect the consumers (ventilation, seat heating, lights, etc.).
- The driver door and the bonnet must be left open while updating the software.
- The parking brake must be released during the software update. Secure the vehicle against unintentional movement.
- During software update, switch on all hazard lights on the vehicle to ensure the permanent activity of the CAN data bus in the vehicle.
- Connect the diagnostics equipment to the vehicle.
- Special functions, software version management, adapt software, 2- SVM by test code.

**NOTICE**

The software configuration (SVM) can be done both with a USB cable and via WiFi if the signal is strong enough. If the WiFi signal is not strong enough a note is displayed (see Figure 1), and the USB cable must be used. The use of Bluetooth is still currently not allowed. Before connecting the USB cable, remove the diagnostics unit radio communication terminal! If the USB cable is connected while the radio communication terminal is attached, the communication will be established via Bluetooth.



**Figure 1:** Example of the information icons when there is sufficient or insufficient signal via WiFi / Bluetooth.

The update procedure can be found at the following path:

- **Software Version Management (SVM) / Adapt software.**



#### NOTICE

When performing the flash procedure, event entries may sometimes be recorded in other control units once the update is complete. In this case, remove the ignition key (wait a few minutes until the CAN switches to standby mode), insert the ignition key again and delete the event entries that have sporadically passed.

## Warranty accounting instructions

Service ID / Anomaly / Manufacturer: 4545 / 0202 / ...



#### NOTICE

In order to simplify the processing of the warranty settlement by the manufacturer, the TPI number (process number) must always be indicated. In markets with "DISS/ SAGA Kopplung" the TPI number is automatically copied from the DISS system. In markets without "DISS/ SAGA Kopplung" the field "MST process number (Service Technique Handbook)" must be completed manually with the TPI number.

Work item No.	Description of work item	Time Units (TU)
01 50 00 00	Guided fault finding/guided function	According to diagnosis protocol. 1)
27 06 89 50	Confirm battery voltage	10 1)
The work items indicated include all the tests as given in the work instructions.		

1) The times indicated are only applicable to this TPI. When submitting the warranty application, please include the number of the TPI used to streamline the process.



#### NOTICE

- The work times published in this TPI correspond to the TUs valid on the date of completion of this publication. The time units (TU) may vary slightly due to a subsequent update of the Catalogue of Work Items. The times currently in force according to the Catalogue of Work Items are valid, except for the work items entered manually (... 99)."
- The time for the Offboard Diagnostic Information System (ODIS) is not included in the times specified below. The time must be invoiced separately using the Offboard Diagnostic Information System (ODIS) diagnostics equipment form.

## Parts information



#### NOTICE

The replacement of parts under this concept is not recommended and may be considered unjustified.