



CUPRA RAVAI

INITIAL PRICING & SPECIFICATION

Updated 13/05/2026



SELECT YOUR TRIM

- ORIGIN
- V1
- V2
- V2 LAUNCH EDITION
- VZ
- VZ EXTREME





RAVAL ORIGIN

PRICE FROM £23,785¹

AVAILABLE ON 37KWH 115PS POWERTRAINS

KEY SPECIFICATION FOR THE ORIGIN TRIM

WHEELS AND TYRES

- 17" alloy wheels with 215/55 R17 92T tyres

EXTERIOR EQUIPMENT

- Electrically adjustable, manual folding and heated door mirrors
- Heat-reflecting glass in front
- Full LED headlamps with high-beam assist
- CUPRA 3D rear lights with ceremony, swiping indicator and illuminated logo
- Rain-sensing wipers

INTERIOR EQUIPMENT

- Interior ambient lighting
- Dimming rear view mirror
- Single-zone climate control

INFOTAINMENT

- 10.25" Digital Cockpit
- Media System One/Infotainment Lite:
 - 12.9" Android Automotive central display

- Wireless Full Link phone integration including Apple CarPlay and Android Auto

- DAB (Digital Audio Broadcasting)

- Leather-wrapped multi-function steering wheel

- 7 speakers

CUPRA CONNECT

- Safety, Service & Remote Services

SEATS AND TRIM

- PULSE Sport comfort seats in black textile with copper stitching - manual adjustment

FUNCTIONAL AND MECHANICAL

- Rear parking sensors
- Sport suspension front and rear
- Adaptive cruise control
- Driving profile selection and conventional shock absorber
- Speed sensitive power steering (Progressive Steering)

SAFETY AND SECURITY

- Anti-theft alarm
- Brake control system (ESC and brake booster)
- Forward collision warning with warning and braking reaction to vehicles, pedestrians and cyclists
- Emergency steering support with turn assist
- Attention and drowsiness assist with driver monitoring
- Lane keeping system plus semi-automatic vehicle control in a medical emergency

WARRANTY

- Five-year/90,000 Warranty



↑ 10.25" DIGITAL COCKPIT

17" ALLOY WHEEL



The CUPRA CONNECT services can be operated only by using available public communication technologies. Please note that due to development of these technologies, especially mobile networks, CUPRA cannot guarantee consistent availability in all countries for the duration of CUPRA CONNECT services. Possible changes in technology may cause permanent unavailability of them.

¹ All prices shown are CUPRA's recommended on the road prices (Recommended On The Road Price or ROTR). Actual prices are set by CUPRA authorised retailers in their sole discretion – always obtain these prices from your chosen CUPRA retailer. The Recommended On The Road Price includes the standard UK delivery charge, number plates, new vehicle registration fee, the first year's Vehicle Excise Duty and VAT (calculated at 20%). Images shown may not reflect base specification and depict optional cost options.



RAVAL V1

PRICE FROM £26,995¹

AVAILABLE ON 37KWH 135PS & 52KWH 210PS POWERTRAINS

IN ADDITION TO ORIGIN

WHEELS AND TYRES

- '18" 'DEFIER' alloy wheels with tyres 215/50 R18 92T

EXTERIOR EQUIPMENT

- Electrically adjustable, folding and heated door mirrors with welcome light
- Dark tinted glass in rear seat area and heat-reflecting glass in front

INTERIOR EQUIPMENT

- Auto-dimming rear view mirror
- Dual-zone climate control

INFOTAINMENT

- 10.25" Digital cockpit
- Media System with Navigation OneInfotainment:
 - 12.9" Android Automotive central display
 - Full app store access
 - Voice assistant
 - Heated, leather-wrapped multi-function steering wheel with satellite buttons and regenerative paddles (paddles on 52kWh battery only)

52kWh BATTERY

RANGE UP TO 275 MILES². POWER CONSUMPTION (COMBINED): 13.6-13.8KWH/100 KM².

CUPRA CONNECT

- Safety, Service, Remote and Online Navigation Services

SEATS AND TRIM

- Heated front seats

FUNCTIONAL AND MECHANICAL

- Front and rear parking sensors
- Rear view camera

SAFETY AND SECURITY

- Keyless Advanced (Keyless Entry and Go)
- Mobile Digital Key (up to 5 keys/devices)
- One physical key + one SmartCard

CHARGING

- Charging cable – Mode 3, type 2/3, 32 A



CUPRA RAVAL IN FIORD BLUE



18" 'DEFIER' ALLOY WHEEL

¹ All prices shown are CUPRA's recommended on the road prices (Recommended On The Road Price or ROTR). Actual prices are set by CUPRA authorised retailers in their sole discretion – always obtain these prices from your chosen CUPRA retailer. The Recommended On The Road Price includes the standard UK delivery charge, number plates, new vehicle registration fee, the first year's Vehicle Excise Duty and VAT (calculated at 20%). Images shown may not reflect base specification and depict optional cost options.

² The accurate range for your vehicle will vary according to a number of different factors which include the route, weather conditions, vehicle load (occupants + luggage), battery age and condition, optional equipment (alloys, tyres, etc.), the use of peripheral energy consumption systems such as heating, air conditioning and heated seats, as well as your driving style. The indicated range has been calculated in compliance with the WLTP regulation which sets out standard test conditions applicable to all car manufacturers. This ensures that the values calculated in accordance with this regulation are comparable for all vehicles.



CUPRA RAVAL V2 IN CENTURY BRONZE

RAVAL V2

PRICE FROM £29,580¹

AVAILABLE ON 37KWH 135PS & 52KWH 210PS POWERTRAINS

IN ADDITION TO THE V1 TRIM

WHEELS AND TYRES

- 19" 'MAVERICK' machined sport silver & black alloy wheels with 235/40 R19 96H tyres

SEATS AND TRIM

- 'IMMERSIVE' Bucket seats in Black Spark Dinamica® with copper stitching
- Electrically adjustable front seats and pneumatically adjustable lumbar support for front seats, with memory function for driver seat

EXTERIOR EQUIPMENT

- Electrically adjustable, folding and heated door mirrors with memory function

INTERIOR EQUIPMENT

- Interior lighting (multi-coloured)
- Interior projections on front door cards
- SmartLight ambient lighting plus key driver information
- Door & side trim panels in PVC

INFOTAINMENT

- Sennheiser AMBEO Immersive premium audio with 12 speakers including subwoofer



↑ MULTI-COLOURED AMBIENT LIGHTING WITH SMARTLIGHT AND INTERIOR PROJECTIONS

↓ 'IMMERSIVE' BUCKET SEATS IN BLACK DINAMICA



19" 'MAVERICK' MACHINED SILVER & BLACK ALLOY WHEELS WITH COPPER ACCENTS

52kWh BATTERY
RANGE UP TO 273 MILES². ELECTRIC CONSUMPTION (COMBINED): 13.6-13.8KWH/100 KM².

¹ All prices shown are CUPRA's recommended on the road prices (Recommended On The Road Price or ROTR). Actual prices are set by CUPRA authorised retailers in their sole discretion – always obtain these prices from your chosen CUPRA retailer. The Recommended On The Road Price includes the standard UK delivery charge, number plates, new vehicle registration fee, the first year's Vehicle Excise Duty and VAT (calculated at 20%). Images shown may not reflect base specification and depict optional cost options.

² The accurate range for your vehicle will vary according to a number of different factors which include the route, weather conditions, vehicle load (occupants + luggage), battery age and condition, optional equipment (alloys, tyres, etc.), the use of peripheral energy consumption systems such as heating, air conditioning and heated seats, as well as your driving style. The indicated range has been calculated in compliance with the WLTP regulation which sets out standard test conditions applicable to all car manufacturers. This ensures that the values calculated in accordance with this regulation are comparable for all vehicles.



RAVAL V2 LAUNCH EDITION

PRICE FROM £32,580¹

AVAILABLE ON 52KWH 210PS POWERTRAIN

IN ADDITION TO THE V2 TRIM

FUNCTIONAL AND MECHANICAL

- 19" 'VANDAL' machined copper alloy wheels with black inserts with 235/40 R19 96H tyres.

EXTERIOR EQUIPMENT

- MATRIX LED Headlights including cornering light and adverse weather lighting

FUNCTIONAL AND MECHANICAL

- Top view camera (with front and rear-view camera system and two side cameras)
- Intelligent Park Assist (including Trained Park Assist and Remote Park Assist)

SAFETY AND SECURITY

- Travel Assist 3.0: Semi-autonomous driving system, Traffic jam assist and Emergency assist.



← 19" 'VANDAL' MACHINED COPPER & BLACK ALLOY WHEEL



CUPRA RAVAL V2 LAUNCH EDITION IN PLASMA IRIDESCENT

RANGE UP TO 272 MILES². ELECTRIC CONSUMPTION (COMBINED): 13.6-13.8KWH/100 KM².

¹ All prices shown are CUPRA's recommended on the road prices (Recommended On The Road Price or ROTR). Actual prices are set by CUPRA authorised retailers in their sole discretion – always obtain these prices from your chosen CUPRA retailer. The Recommended On The Road Price includes the standard UK delivery charge, number plates, new vehicle registration fee, the first year's Vehicle Excise Duty and VAT (calculated at 20%). Images shown may not reflect base specification and depict optional cost options.

² The accurate range for your vehicle will vary according to a number of different factors which include the route, weather conditions, vehicle load (occupants + luggage), battery age and condition, optional equipment (alloys, tyres, etc.), the use of peripheral energy consumption systems such as heating, air conditioning and heated seats, as well as your driving style. The indicated range has been calculated in compliance with the WLTP regulation which sets out standard test conditions applicable to all car manufacturers. This ensures that the values calculated in accordance with this regulation are comparable for all vehicles.



RAVAL VZ

PRICE FROM £34,995¹

AVAILABLE ON 52KWH 225PS POWERTRAIN

IN ADDITION TO THE V2 TRIM

WHEELS AND TYRES

- 19" 'REBEL' machined alloy wheels with copper accents & dark aluminium covers with 235/40 R19 tyres

EXTERIOR EQUIPMENT

- Exterior VZ lettering in dark chrome
- MATRIX LED Headlights including cornering light and adverse weather lighting

INTERIOR EQUIPMENT

- Aluminium pedals

SEATS AND TRIM

- 'FEEL CUP' Bucket seats in vegan leather
- Electrically adjustable seats and pneumatically adjustable lumbar support for front seats, with memory function for driver seat

FUNCTIONAL AND MECHANICAL

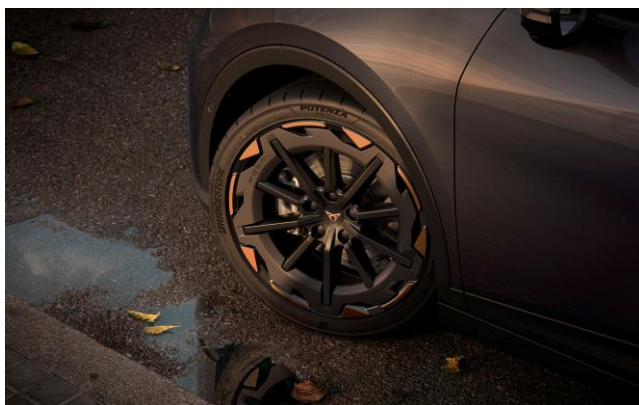
- Dynamic Chassis Control suspension front and rear
- Electronic Limited Slip Differential

SAFETY AND SECURITY

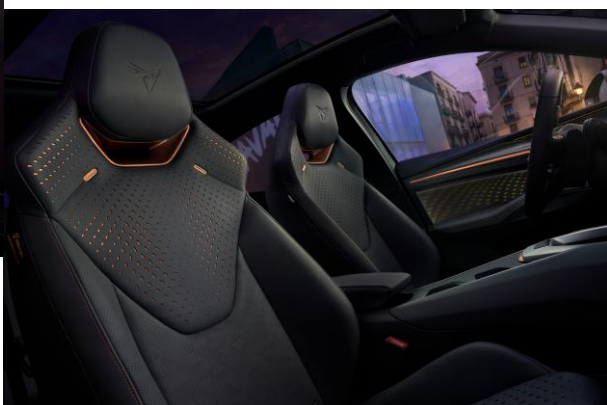
- Extended safety system: proactive passenger protection system



CUPRA RAVAL IN MAGNETIC TECH GREY AND MIDNIGHT BLACK ROOF



← 19" 'REBEL' MACHINED ALLOY WHEEL WITH COPPER INSERTS



VEGAN LEATHER SPORT BUCKET SEATS →

RANGE UP TO 239 MILES². ELECTRIC CONSUMPTION (COMBINED): 13.8-15.9 KWH/100 KM².

¹ All prices shown are CUPRA's recommended on the road prices (Recommended On The Road Price or ROTR). Actual prices are set by CUPRA authorised retailers in their sole discretion – always obtain these prices from your chosen CUPRA retailer. The Recommended On The Road Price includes the standard UK delivery charge, number plates, new vehicle registration fee, the first year's Vehicle Excise Duty and VAT (calculated at 20%). Images shown may not reflect base specification and depict optional cost options.

² The accurate range for your vehicle will vary according to a number of different factors which include the route, weather conditions, vehicle load (occupants + luggage), battery age and condition, optional equipment (alloys, tyres, etc.), the use of peripheral energy consumption systems such as heating, air conditioning and heated seats, as well as your driving style. The indicated range has been calculated in compliance with the WLTP regulation which sets out standard test conditions applicable to all car manufacturers. This ensures that the values calculated in accordance with this regulation are comparable for all vehicles.



RAVAL VZ EXTREME

PR ICE FROM £36,310¹

AVAILABLE ON 52KWH 225PS POWERTRAIN

IN ADDITION TO THE VZ TRIM

WHEELS AND TYRES

- 19" 'REBEL' machined alloy wheels with Sulphur accents & dark aluminium covers with 235/40 R19 96H XL tyres

EXTERIOR EQUIPMENT

- VZ Extreme styling in Sulphur
- Exterior badges in dark chrome (front, rear and steering wheel)
- MATRIX LED Headlights including cornering light and adverse weather lighting
- Tow bar pre-installation

SEATS AND TRIM

- AHEAD CUP Bucket seats in 3D Knit textile

FUNCTIONAL AND MECHANICAL

- Top view camera (with front and rearview camera system and two side cameras)
- Intelligent Park Assist (including Trained Park Assist and Remote Park Assist)

SAFETY AND SECURITY

- Travel Assist 3.0: Semi-autonomous driving system, Traffic jam assist and Emergency assist.

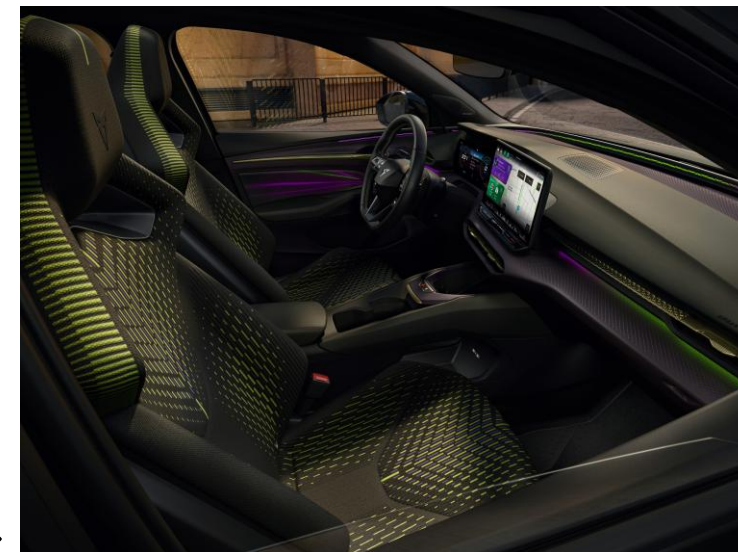
RANGE UP TO 238 MILES². ELECTRIC CONSUMPTION (COMBINED): 13.8-15.9 KWH/100 KM².

¹ All prices shown are CUPRA's recommended on the road prices (Recommended On The Road Price or ROTR). Actual prices are set by CUPRA authorised retailers in their sole discretion – always obtain these prices from your chosen CUPRA retailer. The Recommended On The Road Price includes the standard UK delivery charge, number plates, new vehicle registration fee, the first year's Vehicle Excise Duty and VAT (calculated at 20%). Images shown may not reflect base specification and depict optional cost options.

² The accurate range for your vehicle will vary according to a number of different factors which include the route, weather conditions, vehicle load (occupants + luggage), battery age and condition, optional equipment (alloys, tyres, etc.), the use of peripheral energy consumption systems such as heating, air conditioning and heated seats, as well as your driving style. The indicated range has been calculated in compliance with the WLTP regulation which sets out standard test conditions applicable to all car manufacturers. This ensures that the values calculated in accordance with this regulation are comparable for all vehicles.



CUPRA RAVAL IN MANGANESE MATT



3D KNITTED CUP BUCKET SEATS WITH SULPHUR STITCHING →



PRICING

TRIMS WITH 37KWH BATTERY	BASE PRICE (EXCL. VAT)	VAT @ 20%	RETAIL PRICE (P11D VALUE)	1ST YEAR RFL RATE 2026/27	1ST REG FEE 2026/27	RECOMMENDED ON THE ROAD PRICE*	RECOMMENDED ON THE ROAD PRICE WITH ECG*
Origin 37 kWh 115PS	£19,766.67	£3,953.33	£23,720.00	£10.00	£55.00	£23,785.00	TBC
V1 37 kWh 135PS	£22,441.67	£4,488.33	£26,930.00	£10.00	£55.00	£26,995.00	TBC
V2 37 kWh 135PS	£24,595.83	£4,919.17	£29,515.00	£10.00	£55.00	£29,580.00	TBC
TRIMS WITH 52KWH BATTERY							
V1 52 kWh 210PS	£24,941.67	£4,988.33	£29,930.00	£10.00	£55.00	£29,995.00	£28,495.00
V2 52 kWh 210PS	£27,095.83	£5,419.17	£32,515.00	£10.00	£55.00	£32,580.00	£31,080.00
V2 Launch Edition 52 kWh 210PS	£27,095.83	£5,419.17	£32,515.00	£10.00	£55.00	£32,580.00	£31,080.00
VZ 52 kWh 225PS	£29,108.33	£5,821.67	£34,930.00	£10.00	£55.00	£34,995.00	£33,495.00
VZ Extreme 52 kWh 225PS	£30,204.17	£6,040.83	£36,245.00	£10.00	£55.00	£36,310.00	£34,810.00

*The Recommended 'On The Road' price includes delivery charge to Retailer and number plates, one year's Road Fund License at the 1st year rate (£10 depending on the CO₂ output of the vehicle), and the new vehicle registration fee (£55). VAT is calculated at 20.0%. CUPRA may change RRP's at any time (this includes where there are government changes in regulation and/or legislation). There may be a delay to any RRP displaying correctly on our materials. Always obtain prices from your chosen CUPRA Retailer. Figures shown are for comparability purposes; only compare fuel consumption and CO₂ figures with other vehicles tested to the same technical procedures. These figures may not reflect real life driving results, which will depend upon a number of factors including the accessories fitted (post-registration), variations in weather, driving styles and vehicle load. Data correct at 13/05/2026. Figures quoted are for a range of configurations and are subject to change due to ongoing approvals/changes.