



The new SEAT Leon.

Pricing and specification list.



Contents.

03

Why easymove?

04

Pick your trim.

25

Option prices.

26

**Vehicle
excise duty.**

12

Pick your engine.

17

Pick your colour.

18

Equipment.

26

**Benefit in
kind tax.**

27

Technical data.

33

**Warranties &
service plans.**

Why **easy**move?

We've made it really simple to pick the new SEAT Leon that's right for you. There are multiple individual trims, each with their own unique equipment and appeal.

- 1 Pick the trim that sounds like your kind of car.**
- 2 Choose the engine that suits you.**
- 3 Personalise your Leon with your favourite colour.**

And that's it. It couldn't be easier to do your thing.



1. Pick your trim.



01. **Leon 5dr SE.** The Essential One.

02. **Leon 5dr SE Dynamic.** The Connected One.

03. **Leon 5dr FR.** The Stylish One.

04. **Leon 5dr FR Sport.** The Sporty One.

05. **Leon 5dr XCELLENCE.** The Indulgent One.

06. **Leon 5dr XCELLENCE Lux.** The Luxury One.

1. Pick your trim.



01. **Leon Estate SE.** The Essential One.

02. **Leon Estate SE Dynamic.** The Connected One.

03. **Leon Estate FR.** The Stylish One.

04. **Leon Estate FR Sport.** The Sporty One.

05. **Leon Estate XCELLENCE.** The Indulgent One.

06. **Leon Estate XCELLENCE Lux.** The Luxury One.

Leon SE.

The Essential One.

From £19,855*

Equipped with an 8.25" media system, your Leon is ready for your favourite tracks whilst Full Link technology ensures maximum connectivity between the car and your phone to keep you in touch on the move. Cruise control and speed limiter will keep you at a safe speed, and LED headlights, taillights and Daytime Running Lights mean you're ready to see and be seen.

Key specifications for the SE trim

Wheels and tyres

- 16" Urban alloy wheels with 205/55 R16 91V tyres

Exterior equipment

- Door mirrors (electrically adjustable and heated)
- LED Headlights and taillights
- LED Front fog lamps with cornering function
- Metallic paint
- Separate daytime running light with automatic headlight control

Infotainment

- Full Link smartphone integration (Mirror Link, Wired Apple CarPlay, Wired Google Android Auto)

- Media System
 - 8.25" screen
 - DAB (Digital Audio Broadcasting) and AM/FM radio
 - Bluetooth® audio streaming and handsfree system
 - Steering wheel-mounted audio and phone controls

SEAT Connect:

- Safety & Service: 10 year subscription included.
- Remote Access including online updates: 12 month subscription included (see equipment for full details)

Seats and trim

- Chrome interior detailing
- Cloth upholstery
- Driver and passenger seat manual height-adjustment

Functional and mechanical

- Electric front and rear windows
- Parking sensors (rear)

Safety and security

- Anti-theft alarm system, interior monitoring, backup horn, and towing protection
- Cruise control with speed limiter
- Electronic differential lock (XDS) and dynamic traction support
- KESSY Go (Keyless start)
- Front assist: Forward collision warning braking reaction to vehicles, pedestrians and cyclists
- ISOFIX points in outer rear seats
- Lane Keeping System



Model shown: Leon 5dr SE in Mystery Blue metallic paint.

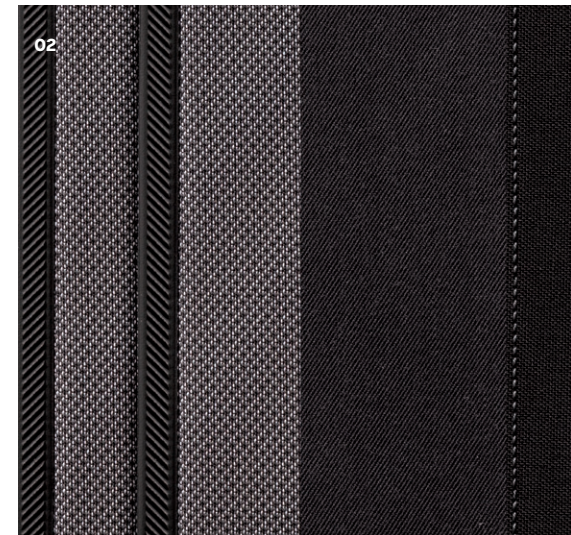


Model shown: Leon Estate SE in Mystery Blue metallic paint.



01

02



01. 16" 'Urban' alloy wheels.

02. Two tone grey and black fabric with dark silver stitching.

*Price is for Leon 5dr SE 1.0 TSI EVO 110PS.

The SEAT Connect services can be operated only by using available public communication technologies. Please note that due to development of these technologies, especially mobile networks, SEAT cannot guarantee consistent availability in all countries for the duration of SEAT Connect services. Possible changes in technology may cause permanent unavailability of them.

6 The new SEAT Leon. Pricing and specification list.

Leon SE Dynamic.

The Connected One.

From £20,955*

17" alloy wheels ensure a smart street presence, while Full Link technology via a 10" smart touch display keeps you connected to your smartphone's features. With an on-board navigation system, cruise control and Park Assist, you're ready for the road and fully connected to the world around you.

In addition to the SE trim

Wheels and tyres

- 17" Dynamic tri-spoke alloy wheels with 225/45 R17 91W tyres

Exterior equipment

- Dark tinted rear windows

Infotainment

- Full Link smartphone integration (Mirror Link, wireless Apple CarPlay, wired Google Android Auto)
- Digital cockpit
- Media system with 10.0" display and navigation

SEAT Connect:

- Safety & Service: 10 year subscription included.
- Remote Access including online updates: 12 month subscription included (see equipment for full details)

Functional and mechanical

- Park assist (including front and rear parking sensors)

*Price is for Leon 5dr SE Dynamic 1.0 TSI EVO 110PS.

The SEAT Connect services can be operated only by using available public communication technologies. Please note that due to development of these technologies, especially mobile networks, SEAT cannot guarantee consistent availability in all countries for the duration of SEAT Connect services. Possible changes in technology may cause permanent unavailability of them.

- 01.** 17" 'Dynamic' tri-spoke alloy wheels.
- 02.** Two tone grey and black fabric with dark silver stitching.



Model shown: Leon 5dr SE Dynamic in Mystery Blue metallic paint.

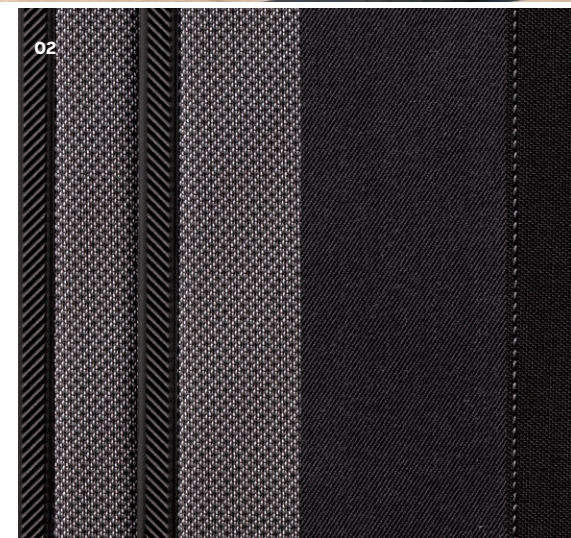


Model shown: Leon Estate SE Dynamic in Mystery Blue metallic paint.



01

02



Leon FR.

The Stylish One.

From £23,185*

Ready to take the wheel in style? While 17" alloy wheels and full LED headlights with dynamic turning signals provide an elegant touch to the exterior, three-zone climate control and ambient lighting keep things cool in the interior.

In addition to the SE Dynamic trim

Wheels and tyres

- 17" Dynamic bi-spoke alloy wheels with 225/45 R17 91W tyres

Exterior equipment

- Door mirrors (electrically adjustable, folding and heated)
- LED Headlights with dynamic turn signals
- Rain sensing wipers
- Separate daytime running light with automatic headlight control and Coming Home feature (automatic)
- FR Sports bumpers

Infotainment

- USB Type C (x4 - 2 in front, 2 in rear)
- Wireless phone charger

Interior equipment

- Ambient lighting

Functional and mechanical

- Three zone climate control
- SEAT drive profile selection
 - Four different modes (Normal-Sport-Eco-Individual)
 - Throttle response
 - Gear shifts mode (only DSG models)
- Sports suspension



Model shown: Leon 5dr FR in Desire Red metallic paint.



Model shown: Leon Estate FR in Desire Red metallic paint.

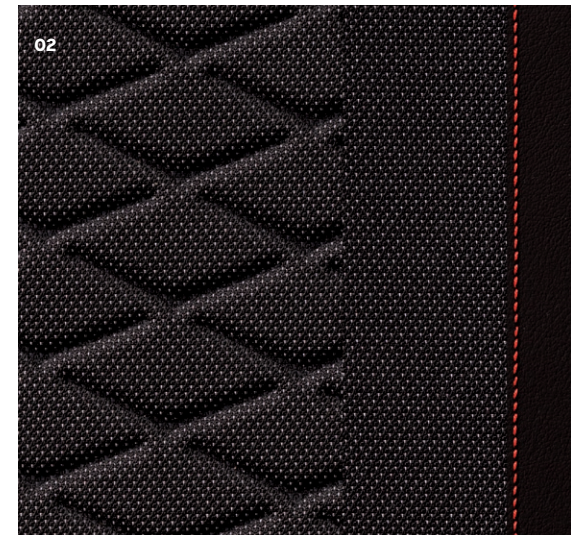


01. 17" 'Dynamic' bi-spoke alloy wheels.

02. Grey fabric with Lava Red stitching.

01

02



*Price is for Leon 5dr FR 1.0 TSI EVO 110PS.

Leon FR Sport.

The Sporty One.

From £25.075*

Ready to stand out? With 18" alloy wheels, dark tinted windows and LED headlights with dynamic turn signals, your Leon FR Sport will make heads turn wherever you drive, while the interior wrap around lighting, coast to coast lighting and microsuede upholstery grab plenty of attention from your passengers.

In addition to the FR trim

Wheels and tyres

- 18" Performance machined alloy wheels with 225/40 R18 92Y tyres

Exterior equipment

- Door mirrors (electrically adjustable, folding, heated and memory)

Interior equipment

- Interior Wraparound lighting

Seats and trim

- Heated front seats
- Leather, heated steering wheel (gearshift paddles replace leather gearstick on DSGs)
- Microsuede upholstery
- Powered driver seat with memory and manual height-adjustment for passenger¹
- Powered lumbar adjustment on driver side, manual on passenger side¹

*Price is for Leon 5dr FR Sport 1.5 TSI EVO 130PS.

¹ Not available on eTSI engine.

01. 18" 'Performance' machined alloy wheels.

02. Soul Black Microsuede with Lava Red stitching.



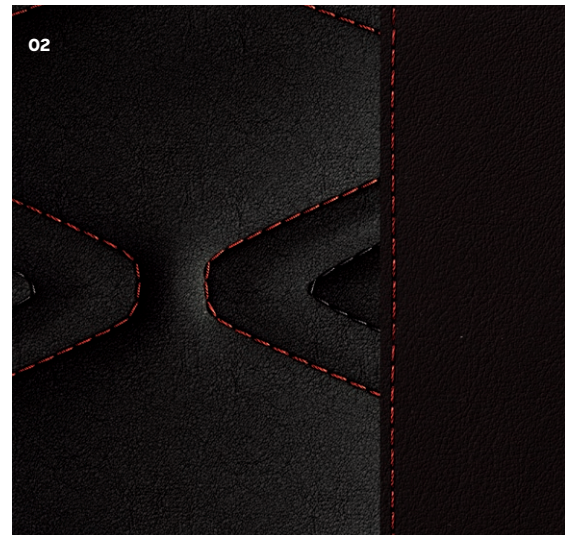
Model shown: Leon 5dr FR Sport in Desire Red metallic paint.



Model shown: Leon Estate FR Sport in Desire Red metallic paint.



01



02

Leon XCELLENCE.

The Indulgent One.

From £26,080*

Your new Leon XCELLENCE oozes class with a host of features designed to keep life simple. Enter with your keys in your pocket with keyless entry and start, then get nice and comfy with electrically heated and adjustable front seats, electric mirrors. There's a risk you may not want to get out again.

In addition to the SE Dynamic trim

Wheels and tyres

- 17" alloy wheels with 225/45 R17 91W tyres

Exterior equipment

- Door mirrors (electrically adjustable, folding, heated and memory)
- LED Headlights with dynamic turn signals, LED taillights and rear fog lights with rear coast to coast lighting
- Separate daytime running light with automatic headlight control and Coming Home feature (automatic)

Infotainment

- USB Type C (x4 - 2 in front, 2 in rear)
- Wireless phone charger

Seats and trim

- Heated front seats
- Leather, heated steering wheel (gearshift paddles replace leather gearstick on DSGs)

- Microsuede upholstery
- Powered driver seat with memory and manual height-adjustment for passenger¹
- Powered lumbar adjustment on driver side, manual on passenger side¹

Functional and mechanical

- Three zone climate control
- Rear view camera
- SEAT drive profile selection
 - Four different modes (Normal-Sport-Eco-Individual)
 - Throttle response
 - Gear shifts mode (only DSG models)

Safety and security

- KESSY Advanced: (Keyless start, keyless entry)

01. 17" 'Dynamic' alloy wheels.

02. Soul Black Microsuede.

*Price is for Leon 5dr XCELLENCE

1.5 TSI EVO 130PS.

¹ Not available on eTSI engine.



Model shown: Leon 5dr XCELLENCE in Urban Silver metallic paint.



Model shown: Leon Estate XCELLENCE in Urban Silver metallic paint.



01

02



Leon XCELLENCE Lux.

The Luxury One.

From £27,435*

Travel in luxury in the truly opulent Leon XCELLENCE Lux with a virtual pedal[^] giving you hands free access to the luggage compartment and supple leather upholstery offering the ultimate comfort within. Intuitive driving is made simple thanks to dynamic road sign display, auto high beam assist, plus predictive and adaptive cruise control.

In addition to the XCELLENCE trim

Wheels and tyres

- 18" Aerodynamic Performance alloy wheels (Nuclear grey) with 225/40 R18 92Y XL tyres

Interior equipment

- Interior Wraparound lighting

Seats and trim

- Leather upholstery

Functional and mechanical

- Virtual pedal with electric tailgate (Estate only)

Safety and security

- Safety and Driving Pack (M)
 - Dynamic road sign display
 - High Beam Assist
 - Predictive and adaptive cruise control with follow to stop and speed limiter

*Price is for Leon 5dr XCELLENCE Lux 1.5 TSI EVO 130PS.

[^]Virtual Pedal on Estate only.

01. 18" Aerodynamic 'Performance' alloy wheels.

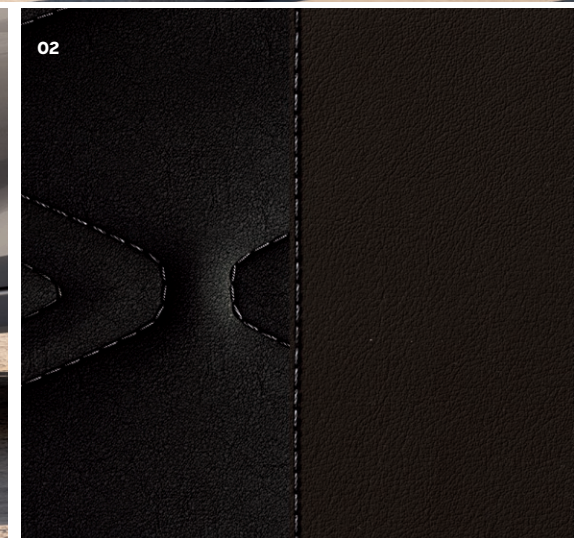
02. Black Nappa Leather.



Model shown: Leon 5dr XCELLENCE Lux in Urban Silver metallic paint.



Model shown: Leon Estate XCELLENCE Lux in Urban Silver metallic paint.



2. Pick your engine.

	Derivative	Fuel	WLTP CO ₂ g/km	WLTP Combined mpg	Insurance group (1-50)	BIK 2020/21*	Basic price	VAT @ 20%	Retail price (P11D value)	1st Year RFL Rate 2020/21	1st reg fee 2020/21	Recommended On The Road Price
5dr SE	1.0 TSI EVO 110PS	P	123	47.1-52.3	15E	27%	£16,354.17	£3,270.83	£19,625.00	£175.00	£55.00	£19,855.00
	1.0 eTSI DSG-auto 110PS	AFV	124	45.6-51.4	TBC	27%	£18,750.00	£3,750.00	£22,500.00	£165.00	£55.00	£22,720.00
	1.5 TSI EVO 130PS	P	124	46.3-52.3	18E	27%	£17,662.50	£3,532.50	£21,195.00	£175.00	£55.00	£21,425.00
	2.0 TDI 115PS	D	111	60.1-67.3	19E	29%	£18,804.17	£3,760.83	£22,565.00	£215.00	£55.00	£22,835.00
5dr SE Dynamic	1.0 TSI EVO 110PS	P	126	47.1-51.4	15E	28%	£17,270.83	£3,454.17	£20,725.00	£175.00	£55.00	£20,955.00
	1.0 eTSI DSG-auto 110PS	AFV	128	45.6-50.4	TBC	28%	£19,666.67	£3,933.33	£23,600.00	£165.00	£55.00	£23,820.00
	1.5 TSI EVO 130PS	P	126	46.3-50.4	19E	28%	£18,579.17	£3,715.83	£22,295.00	£175.00	£55.00	£22,525.00
	2.0 TDI 115PS	D	114	60.1-64.2	19E	29%	£19,720.83	£3,944.17	£23,665.00	£215.00	£55.00	£23,935.00

*BIK value is based on WLTP CO₂s and applicable from 01/10/2020.

The Recommended 'On The Road' price includes delivery charge to Retailer and number plates, one year's Road Fund Licence at the 1st year rate (£0 – £2,135 depending on the CO₂ output of the vehicle), and the new vehicle registration fee (£55). VAT is calculated at 20.0%. SEAT may change RRP's at any time (this includes where there are government changes in regulation and/or legislation). There may be a delay to any RRP displaying correctly on our materials. Always obtain prices from your chosen SEAT Retailer. Figures shown are for comparability purposes; only compare fuel consumption and CO₂ figures with other vehicles tested to the same technical procedures. These figures may not reflect real life driving results, which will depend upon a number of factors including the accessories fitted (post-registration), variations in weather, driving styles and vehicle load. Data correct at 01/10/2020.

2. Pick your engine.

	Derivative	Fuel	WLTP CO ₂ g/km	WLTP Combined mpg	Insurance group (1-50)	BIK 2020/21*	Basic price	VAT @ 20%	Retail price (P11D value)	1st Year RFL Rate 2020/21	1st reg fee 2020/21	Recommended On The Road Price
5dr FR	1.0 TSI EVO 110PS	P	125	47.1-51.4	16E	28%	£19,129.17	£3,825.83	£22,955.00	£175.00	£55.00	£23,185.00
	1.0 eTSI DSG-auto 110PS	AFV	127	45.6-50.4	TBC	28%	£20,908.33	£4,181.67	£25,090.00	£165.00	£55.00	£25,310.00
	1.4 e-HYBRID DSG-auto 204PS	AFV	27	217.3-235.4	TBC	10%	£25,762.50	£5,152.50	£30,915.00	£0.00	£55.00	£30,970.00
	1.5 TSI EVO 130PS	P	126	46.3-50.4	19E	28%	£19,404.17	£3,880.83	£23,285.00	£175.00	£55.00	£23,515.00
	1.5 TSI EVO 150PS	P	132	44.8-48.7	22E	29%	£20,445.83	£4,089.17	£24,535.00	£215.00	£55.00	£24,805.00
	1.5 eTSI DSG-auto 150PS	AFV	133	44.1-48.7	22E	29%	£22,170.83	£4,434.17	£26,605.00	£205.00	£55.00	£26,865.00
5dr FR First Edition	1.5 eTSI DSG-auto 150PS	AFV	135	44.1-47.9	TBC	30%	£24,816.67	£4,963.33	£29,780.00	£205.00	£55.00	£30,040.00
	1.4 e-HYBRID DSG-auto 204PS	AFV	28	217.3-217.3	TBC	10%	£30,050.00	£6,010.00	£36,060.00	£0.00	£55.00	£36,115.00
5dr FR Sport	1.0 eTSI DSG-auto 110PS	AFV	128	45.6-50.4	TBC	28%	£22,208.33	£4,441.67	£26,650.00	£165.00	£55.00	£26,870.00
	1.4 e-HYBRID DSG-auto 204PS	AFV	28	217.3-235.4	TBC	10%	£27,062.50	£5,412.50	£32,475.00	£0.00	£55.00	£32,530.00
	1.5 TSI EVO 130PS	P	127	46.3-50.4	20E	28%	£20,704.17	£4,140.83	£24,845.00	£175.00	£55.00	£25,075.00
	1.5 TSI EVO 150PS	P	133	44.8-48.7	22E	29%	£21,745.83	£4,349.17	£26,095.00	£215.00	£55.00	£26,365.00
	1.5 eTSI DSG-auto 150PS	AFV	134	44.1-47.9	22E	29%	£23,470.83	£4,694.17	£28,165.00	£205.00	£55.00	£28,425.00

*BIK value is based on WLTP CO₂s and applicable from 01/10/2020.

The Recommended 'On The Road' price includes delivery charge to Retailer and number plates, one year's Road Fund Licence at the 1st year rate (£0 – £2,135 depending on the CO₂ output of the vehicle), and the new vehicle registration fee (£55). VAT is calculated at 20.0%. SEAT may change RRP's at any time (this includes where there are government changes in regulation and/or legislation). There may be a delay to any RRP displaying correctly on our materials. Always obtain prices from your chosen SEAT Retailer. Plug-in vehicles require mains electricity for charging. Figures for hybrid vehicles were obtained using a combination of battery power and fuel. Figures shown are for comparability purposes; only compare fuel consumption and CO₂ figures with other vehicles tested to the same technical procedures. These figures may not reflect real life driving results, which will depend upon a number of factors including the accessories fitted (post-registration), variations in weather, driving styles and vehicle load. Data correct at 01/10/2020.

2. Pick your engine.

	Derivative	Fuel	WLTP CO ₂ g/km	WLTP Combined mpg	Insurance group (1-50)	BIK 2020/21*	Basic price	VAT @ 20%	Retail price (P11D value)	1st Year RFL Rate 2020/21	1st reg fee 2020/21	Recommended On The Road Price
5dr XCELLENCE	1.0 eTSI DSG-auto 110PS	AFV	128	45.6-50.4	TBC	28%	£21,900.00	£4,380.00	£26,280.00	£165.00	£55.00	£26,500.00
	1.4 e-HYBRID DSG-auto 204PS	AFV	27	217.3-235.4	TBC	10%	£27,420.83	£5,484.17	£32,905.00	£0.00	£55.00	£32,960.00
	1.5 TSI EVO 130PS	P	127	46.3-50.4	20E	28%	£21,541.67	£4,308.33	£25,850.00	£175.00	£55.00	£26,080.00
	1.5 TSI EVO 150PS	P	133	44.8-47.9	22E	29%	£22,150.00	£4,430.00	£26,580.00	£215.00	£55.00	£26,850.00
	1.5 eTSI DSG-auto 150PS	AFV	134	44.1-47.9	23E	29%	£23,200.00	£4,640.00	£27,840.00	£205.00	£55.00	£28,100.00
5dr XCELLENCE Lux	1.0 eTSI DSG-auto 110PS	AFV	129	45.6-49.6	TBC	28%	£23,029.17	£4,605.83	£27,635.00	£165.00	£55.00	£27,855.00
	1.4 e-HYBRID DSG-auto 204PS	AFV	28	217.3-235.4	TBC	10%	£28,550.00	£5,710.00	£34,260.00	£0.00	£55.00	£34,315.00
	1.5 TSI EVO 130PS	P	128	46.3-50.4	20E	28%	£22,670.83	£4,534.17	£27,205.00	£175.00	£55.00	£27,435.00
	1.5 TSI EVO 150PS	P	133	44.8-48.7	22E	29%	£23,279.17	£4,655.83	£27,935.00	£215.00	£55.00	£28,205.00
	1.5 eTSI DSG-auto 150PS	AFV	134	44.1-47.9	23E	29%	£24,329.17	£4,865.83	£29,195.00	£205.00	£55.00	£29,455.00

*BIK value is based on WLTP CO₂s and applicable from 01/10/2020.

The Recommended 'On The Road' price includes delivery charge to Retailer and number plates, one year's Road Fund Licence at the 1st year rate (£0 – £2,135 depending on the CO₂ output of the vehicle), and the new vehicle registration fee (£55). VAT is calculated at 20.0%. SEAT may change RRP's at any time (this includes where there are government changes in regulation and/or legislation). There may be a delay to any RRP displaying correctly on our materials. Always obtain prices from your chosen SEAT Retailer. Plug-in vehicles require mains electricity for charging. Figures for hybrid vehicles were obtained using a combination of battery power and fuel. Figures shown are for comparability purposes; only compare fuel consumption and CO₂ figures with other vehicles tested to the same technical procedures. These figures may not reflect real life driving results, which will depend upon a number of factors including the accessories fitted (post-registration), variations in weather, driving styles and vehicle load. Data correct at 01/10/2020.

2. Pick your engine.

	Derivative	Fuel	WLTP CO ₂ g/km	WLTP Combined mpg	Insurance group (1-50)	BIK 2020/21*	Basic price	VAT @ 20%	Retail price (P11D value)	1st Year RFL Rate 2020/21	1st reg fee 2020/21	Recommended On The Road Price
Estate SE	1.5 TSI EVO 130PS	P	124	46.3-51.4	18E	27%	£18,520.83	£3,704.17	£22,225.00	£175.00	£55.00	£22,455.00
Estate SE Dynamic	1.5 TSI EVO 130PS	P	127	46.3-50.4	19E	28%	£19,437.50	£3,887.50	£23,325.00	£175.00	£55.00	£23,555.00
Estate FR	1.4 e-HYBRID DSG-auto 204PS	AFV	27	217.3-235.4	TBC	10%	£26,620.83	£5,324.17	£31,945.00	£0.00	£55.00	£32,000.00
	1.5 TSI EVO 130PS	P	127	46.3-50.4	19E	28%	£20,262.50	£4,052.50	£24,315.00	£175.00	£55.00	£24,545.00
	1.5 TSI EVO 150PS	P	133	44.1-47.9	22E	29%	£21,320.83	£4,264.17	£25,585.00	£215.00	£55.00	£25,855.00
	1.5 eTSI DSG-auto 150PS	AFV	133	44.1-47.9	22E	29%	£23,029.17	£4,605.83	£27,635.00	£205.00	£55.00	£27,895.00
Estate FR Sport	1.4 e-HYBRID DSG-auto 204PS	AFV	28	217.3-217.3	TBC	10%	£27,920.83	£5,584.17	£33,505.00	£0.00	£55.00	£33,560.00
	1.5 TSI EVO 130PS	P	128	46.3-50.4	20E	28%	£21,562.50	£4,312.50	£25,875.00	£175.00	£55.00	£26,105.00
	1.5 TSI EVO 150PS	P	134	44.1-47.9	22E	29%	£22,620.83	£4,524.17	£27,145.00	£215.00	£55.00	£27,415.00
	1.5 eTSI DSG-auto 150PS	AFV	134	44.1-47.9	22E	29%	£24,329.17	£4,865.83	£29,195.00	£205.00	£55.00	£29,455.00

*BIK value is based on WLTP CO₂s and applicable from 01/10/2020.

The Recommended 'On The Road' price includes delivery charge to Retailer and number plates, one year's Road Fund Licence at the 1st year rate (£0 – £2,135 depending on the CO₂ output of the vehicle), and the new vehicle registration fee (£55). VAT is calculated at 20.0%. SEAT may change RRP's at any time (this includes where there are government changes in regulation and/or legislation). There may be a delay to any RRP displaying correctly on our materials. Always obtain prices from your chosen SEAT Retailer. Plug-in vehicles require mains electricity for charging. Figures for hybrid vehicles were obtained using a combination of battery power and fuel. Figures shown are for comparability purposes; only compare fuel consumption and CO₂ figures with other vehicles tested to the same technical procedures. These figures may not reflect real life driving results, which will depend upon a number of factors including the accessories fitted (post-registration), variations in weather, driving styles and vehicle load. Data correct at 01/10/2020.

2. Pick your engine.

	Derivative	Fuel	WLTP CO ₂ g/km	WLTP Combined mpg	Insurance group (1-50)	BIK 2020/21*	Basic price	VAT @ 20%	Retail price (P11D value)	1st Year RFL Rate 2020/21	1st reg fee 2020/21	Recommended On The Road Price
Estate XCELLENCE	1.4 e-HYBRID DSG-auto 204PS	AFV	28	217.3-235.4	TBC	10%	£28,279.17	£5,655.83	£33,935.00	£0.00	£55.00	£33,990.00
	1.5 TSI EVO 130PS	P	128	46.3-50.4	20E	28%	£22,400.00	£4,480.00	£26,880.00	£175.00	£55.00	£27,110.00
	1.5 TSI EVO 150PS	P	134	44.1-47.9	22E	29%	£23,008.33	£4,601.67	£27,610.00	£215.00	£55.00	£27,880.00
	1.5 eTSI DSG-auto 150PS	AFV	134	44.1-47.9	23E	29%	£24,058.33	£4,811.67	£28,870.00	£205.00	£55.00	£29,130.00
Estate XCELLENCE Lux	1.4 e-HYBRID DSG-auto 204PS	AFV	28	217.3-235.4	TBC	10%	£29,670.83	£5,934.17	£35,605.00	£0.00	£55.00	£35,660.00
	1.5 TSI EVO 130PS	P	127	46.3-50.4	20E	28%	£23,791.67	£4,758.33	£28,550.00	£175.00	£55.00	£28,780.00
	1.5 TSI EVO 150PS	P	134	44.1-47.9	22E	29%	£24,400.00	£4,880.00	£29,280.00	£215.00	£55.00	£29,550.00
	1.5 eTSI DSG-auto 150PS	AFV	134	44.1-47.9	23E	29%	£25,450.00	£5,090.00	£30,540.00	£205.00	£55.00	£30,800.00

*BIK value is based on WLTP CO₂s and applicable from 01/10/2020.

The Recommended 'On The Road' price includes delivery charge to Retailer and number plates, one year's Road Fund Licence at the 1st year rate (£0 – £2,135 depending on the CO₂ output of the vehicle), and the new vehicle registration fee (£55). VAT is calculated at 20.0%. SEAT may change RRP's at any time (this includes where there are government changes in regulation and/or legislation). There may be a delay to any RRP displaying correctly on our materials. Always obtain prices from your chosen SEAT Retailer. Plug-in vehicles require mains electricity for charging. Figures for hybrid vehicles were obtained using a combination of battery power and fuel. Figures shown are for comparability purposes; only compare fuel consumption and CO₂ figures with other vehicles tested to the same technical procedures. These figures may not reflect real life driving results, which will depend upon a number of factors including the accessories fitted (post-registration), variations in weather, driving styles and vehicle load. Data correct at 01/10/2020.

3. Pick your colour.

Print and screen view do not provide an exact representation of colour.
Please refer to the paint colour moulds at your local SEAT Retailer.



White¹

SE SE Dyn FR FRS XC XCL



Emocion Red¹

SE SE Dyn FR FRS XC XCL



Urban Silver²

SE SE Dyn FR FRS XC XCL



Magnetic Grey²

SE SE Dyn FR FRFE FRS XC XCL



Nevada White²

SE SE Dyn FR FRS XC XCL



Desire Red²

FR FRS XC XCL



Mystery Blue²

SE SE Dyn FR FRS XC XCL



Midnight Black²

SE SE Dyn FR FRFE FRS XC XCL

SE SE SE Dyn SE Dynamic FR FR FRFE FR First Edition³ FRS FR Sport XC XCELLENCE XCL XCELLENCE Lux ¹Non-metallic ²Metallic ³FR First Edition is only available on 5DR models.

Equipment.

■ Standard □ Optional – Not available

	SE	SE Dynamic	FR	5DR e-HYBRID FR First Edition	FR Sport	XCELLENCE	XCELLENCE Lux
Wheels and tyres							
16" 'Urban' alloy wheels with 205/55 R16 91V tyres	■	–	–	–	–	–	–
17" 'Dynamic' tri-spoke alloy wheels with 225/45 R17 91W tyres	–	■	–	–	–	–	–
17" 'Dynamic' bi-spoke alloy wheels with 225/45 R17 91W tyres	–	–	■	–	–	–	–
18" 'Performance' machined alloy wheels with 225/40 R18 92Y tyres	–	–	–	■	■	–	–
17" alloy wheels with 225/45 R17 91W tyres	–	–	–	–	–	■	–
18" Aerodynamic Performance alloy wheels (Nuclear grey) with 225/40 R18 92Y XL tyres	–	–	–	–	–	–	■
Emergency tyre repair kit	■	■	■	■	■	■	■
Tool kit (without jack)	■	■	■	■	■	■	■
Space saver spare wheel and jack	□	□	□	–	□	□	□

Equipment.

■ Standard – Not available

	SE	SE Dynamic	FR	5DR e-HYBRID FR First Edition	FR Sport	XCELLENCE	XCELLENCE Lux
Exterior equipment							
Chrome roof rails (Estate only)	–	–	–	–	–	■	■
Dark tinted rear windows	–	■	■	■	■	■	■
Door mirrors (electrically adjustable and heated)	■	■	–	–	–	–	–
Door mirrors (electrically adjustable, folding and heated)	–	–	■	■	–	–	–
Door mirrors (electrically adjustable, folding, heated and memory)	–	–	–	–	■	■	■
FR Sports bumpers	–	–	■	■	■	–	–
LED Headlights and taillights	■	■	–	–	–	–	–
LED Headlights with dynamic turn signals: Welcome light silhouette from exterior mirrors, LED headlamps, LED taillights with dynamic turn signals	–	–	■	■	■	■	■
LED Front fog lamps with cornering function	■	■	■	■	■	■	■
LED rear fog lamps	■	■	■	■	■	■	■
Matt Black roof rails (Estate only)	■	■	■	–	■	–	–
Metallic paint	■	■	■	■	■	■	■
Panoramic sunroof	–	–	–	■	–	–	–
Rain sensing wipers	–	–	■	■	■	■	■
Separate daytime running light with automatic headlight control	■	■	–	–	–	–	–
Separate daytime running light with automatic headlight control and Coming Home feature (automatic)	–	–	■	■	■	■	■

Equipment.

■ Standard □ Optional – Not available

	SE	SE Dynamic	FR	5DR e-HYBRID FR First Edition	FR Sport	XCELLENCE	XCELLENCE Lux
Infotainment							
Digital cockpit	–	■	■	■	■	■	■
Full Link smartphone integration (Mirror Link, Wired Apple CarPlay, Wired Google Android Auto)	■	–	–	–	–	–	–
Full Link smartphone integration (Mirror Link, Wireless Apple CarPlay, Wired Google Android Auto)	–	■	■	■	■	■	■
Media System: 8,25" screen, Two USB Type C ports in front (data only), Seven speakers, DAB (Digital Audio Broadcasting) and AM/FM radio, Bluetooth® audio streaming and handsfree system, Steering wheel-mounted audio and phone controls	■	–	–	–	–	–	–
Media System Plus with Navigation: 10.0" smart touch display, USB Type C ports (two on SE dynamic, four on FR onwards), seven speakers, DAB Digital Audio Broadcasting) and AM/FM radio, Bluetooth® audio streaming and handsfree system, Steering wheel-mounted audio and phone controls, Navigation system, Natural voice control	–	■	■	■	■	■	■
SEAT Connect: Safety, Service and Remote: Safety & Service: 10 year subscription included: Private emergency call, Breakdown call, Service scheduling Remote Access: 12 month subscription included: Driving data, Parking position, Remote lock and unlock, Anti-theft/area/speed alert	■	–	–	–	–	–	–
SEAT Connect: Safety, Service, Remote & Online: As per SEAT Connect: Safety, Service and Remote plus... Online infotainment: 12 month subscription included: Online map update, Online traffic information, Online route calculation, Parking and petrol stations	–	■	■	■	■	■	■
Seven Speakers	■	■	■	■	■	■	■
USB Type C (x2 in front)	■	■	–	–	–	–	–
USB Type C (x4 - 2 in front, 2 in rear)	–	–	■	■	■	■	■
Wireless phone charger	–	–	■	■	■	■	■
12v socket in loadspace (Estate only)	■	■	■	–	■	■	■

The SEAT Connect services can be operated only by using available public communication technologies. Please note that due to development of these technologies, especially mobile networks, SEAT cannot guarantee consistent availability in all countries for the duration of SEAT Connect services. Possible changes in technology may cause permanent unavailability of them.

20 The new SEAT Leon. Pricing and specification list.

Equipment.

■ Standard □ Optional – Not available

	SE	SE Dynamic	FR	5DR e-HYBRID FR First Edition	FR Sport	XCELLENCE	XCELLENCE Lux
Interior equipment							
Dimming rear view mirror	■	■	–	–	–	–	–
Auto-dimming rear view mirror	–	–	■	■	■	■	■
Interior lighting	■	■	■	■	■	■	■
Ambient lighting	–	–	■	■	■	■	■
Interior Wraparound lighting	–	–	□	■	■	□	■
Front centre armrest	–	–	■	■	■	■	■
Front and rear reading lights (four)	■	■	■	■	■	■	■
Sunvisors with illuminated mirror	■	■	■	■	■	■	■

Equipment.

■ Standard – Not available

	SE	SE Dynamic	FR	5DR e-HYBRID FR First Edition	FR Sport	XCELLENCE	XCELLENCE Lux
Seats and trim							
Black headlining	–	–	–	■	■	–	–
Chrome interior detailing	■	■	■	■	■	■	■
Cloth upholstery	■	■	■	■	–	–	–
Driver and passenger seat manual height-adjustment	■	■	■	■	–	–	–
Driver seat manual lumbar adjustment	■	■	–	–	–	–	–
Front seats manual lumbar adjustment	–	–	■	■	–	–	–
Heated front seats	–	–	–	■	■	■	■
Illuminated front door sill	–	–	■	■	■	■	■
Leather flat bottomed, perforated steering wheel and leather gearstick (gearshift paddles replace leather gearstick on DSGs)	■	■	–	–	–	–	–
Leather flat bottomed, perforated steering (with red stitching and FR logo) and leather gearstick (gearshift paddles replace leather gearstick on DSGs)	–	–	■	–	–	–	–
Leather, heated steering wheel (gearshift paddles replace leather gearstick on DSGs)	–	–	–	■	■	■	■
Leather upholstery	–	–	–	–	–	–	■
Microsuede upholstery	–	–	–	–	■	■	–
Powered driver seat with memory and manual height-adjustment for passenger (Not available on eTSI engine)	–	–	–	–	■	■	■
Powered lumbar adjustment on driver side, manual on passenger side (Not available on eTSI engine)	–	–	–	–	■	■	■
Rear bench seats with 60/40 split	■	■	–	–	–	–	–
Rear bench seats with 60/40 split and armrest	–	–	■	■	■	■	■
Storage pockets on rear of front seats	■	■	■	■	■	■	■

Equipment.

■ Standard □ Optional – Not available

	SE	SE Dynamic	FR	5DR e-HYBRID FR First Edition	FR Sport	XCELLENCE	XCELLENCE Lux
Functional and mechanical							
12v power supply in centre console	■	■	■	■	■	■	■
Air conditioning	■	■	–	–	–	–	–
Charging cable (Mode 2) (e-HYBRID only) 10 amp	–	–	■	■	■	■	■
Charging cable (Mode 3) (e-HYBRID only) 16 amp	–	–	□	■	□	□	□
SEAT drive profile selection: Four different modes (Normal-Sport-Eco-Individual), Throttle response, Gear shifts mode (only DSG models)	–	–	■	–	■	–	–
Electro-mechanical power steering (speed-sensitive)	■	■	■	–	■	■	■
Electric front and rear windows	■	■	■	■	■	■	■
Electronic parking brake	■	■	■	■	■	■	■
Parking sensors (rear)	■	–	–	–	–	–	–
Park assist (including front and rear parking sensors)	–	■	■	■	■	■	■
Rear view camera	–	–	–	■	–	■	■
Start-stop and regenerative braking	■	■	■	■	■	■	■
Sports suspension	–	–	■	–	■	–	–
Three zone climate control	–	–	■	■	■	■	■
Virtual pedal with electric tailgate (Estate only)	–	–	–	–	–	–	■

Equipment.

■ Standard □ Optional – Not available

	SE	SE Dynamic	FR	5DR e-HYBRID FR First Edition	FR Sport	XCELLENCE	XCELLENCE Lux
Safety and security							
Anti-theft alarm system, interior monitoring, backup horn, and towing protection	■	■	■	■	■	■	■
Brake control system (ESC and brake booster)	■	■	■	■	■	■	■
Cruise control with speed limiter	■	■	■	–	■	■	■
Driver and front passenger airbags with front passenger airbag deactivation, front side, curtain airbags	■	■	■	■	■	■	■
Extended safety system: Seat belt tensioner, window closure and hazard lights	■	■	■	■	■	■	■
Front assist: Forward collision warning braking reaction to vehicles, pedestrians and cyclists	■	■	■	■	■	■	■
Folding boot cover (Sliding on Estate)	■	■	■	■	■	■	■
Height-adjustable front and rear headrests (with third headrest in rear)	■	■	■	■	■	■	■
KESY Go (Keyless start)	■	■	■	–	■	–	–
KESY Advanced: (Keyless start and keyless entry)	–	–	–	■	–	■	■
ISOFIX points in outer rear seats with top tether anchorage points	■	■	■	■	■	■	■
Lane Keeping System	■	■	■	–	■	■	■
Lockable tailgate	■	■	■	■	■	■	■
Safety and Driving Pack (M): Dynamic road sign display, Auto High Beam Assist, Predictive and adaptive cruise control with follow to stop and speed limiter	–	–	□	–	□	□	■
Safety and Driving Pack (L): Dynamic road sign display, Auto High Beam Assist, Predictive and adaptive cruise control with follow to stop and speed limiter, Side assist, exit assist and exit warning system	–	–	□	–	□	□	–
Safety and Driving Pack (XL): Dynamic road sign display, Auto High Beam Assist, Predictive and adaptive cruise control with follow to stop and speed limiter, Side assist, exit assist and exit warning system, Semi-autonomous vehicle control in an emergency, Heated Leather wrapped multi-function steering wheel with tiptronic	–	–	□	■	□	□	–
Seat belt reminder for front and rear seats	■	■	■	■	■	■	■
Tiredness recognition system	■	■	■	■	■	■	■
Tyre Pressure Monitoring System	■	■	■	■	■	■	■

Option prices.

■ Standard □ Optional – Not available

	SE	SE Dynamic	FR	FR Sport	XCELLENCE	XCELLENCE Lux	Basic price	VAT @ 20%	Recommended retail price
Wheels and tyres									
Space saver spare wheel (in lieu of standard repair kit) ¹	□	□	□	□	□	□	£95.83	£19.17	£115.00
Exterior equipment									
Tow bar pre-installation	□	□	□	□	□	□	£112.50	£22.50	£135.00
Electric towing hook ¹	□	□	□	□	□	□	£583.33	£116.67	£700.00
Panoramic sunroof (5dr)	□	□	□	□	□	□	£800.00	£160.00	£960.00
Panoramic sunroof (Estate)	□	□	□	□	□	□	£816.67	£163.33	£980.00
Interior equipment									
Interior wraparound lighting (FR)	–	–	□	■	–	–	£220.83	£44.17	£265.00
Interior wraparound lighting (XCELLENCE)	–	–	–	–	□	■	£75.00	£15.00	£90.00
Functional equipment									
Safety and Driving Pack (M):									
Dynamic road sign display, Auto High Beam Assist, Predictive and adaptive cruise control with follow to stop and speed limiter	–	–	□	□	□	■	£183.33	£36.67	£220.00
Safety and Driving Pack (L):									
(requires interior wraparound lighting)									
Dynamic road sign display, Auto High Beam Assist, Predictive and adaptive cruise control with follow to stop and speed limiter, Side assist, exit assist and exit warning system	–	–	□	□	□	–	£512.50	£102.50	£615.00
Safety and Driving Pack (XL): (requires interior wraparound lighting and only available on DSG-auto engines)									
Dynamic road sign display, Auto High Beam Assist, Predictive and adaptive cruise control with follow to stop and speed limiter, Side assist, exit assist and exit warning system, Semi-autonomous vehicle control in an emergency, Heated Leather wrapped multi-function steering wheel with tiptronic	–	–	□	□	□	–	£658.33	£131.67	£790.00
Charging cable (Mode 3) (e-HYBRID only) 16 amp	–	–	□	□	□	□	£120.83	£24.17	£145.00

¹Not available on e-HYBRID engines.

Vehicle excise duty.

All new vehicles are subject to a form of Vehicle Excise Duty (VED) based on the type of fuel the vehicle uses and its carbon dioxide (CO₂) emission level, measured in grammes per kilometre (g/km). The table below illustrates the duty you will pay based on the DVLA bandings.

12-month Road Fund Licence (RFL) rate for petrol and diesel cars: Effective from 1 April 2020 until 31 March 2021

CO ₂ g/km	1st year rate – Petrol / Diesel	1st year rate – Alternative Fuel Vehicles (AFVs)
0	£0	£0
1	£10	£0
51	£25	£15
76	£110	£100
91	£135	£125
101	£155	£145
111	£175	£165
131	£215	£205
151	£540	£530
171	£870	£860
191	£1,305	£1,295
226	£1,850	£1,840
256	£2,175	£2,165

The standard rate for Petrol and Diesel is £150 and £140 for Alternative Fuel Vehicles. Please be aware vehicles with a list price (RRP), including options, higher than £40,000 will incur an additional £325 a year in vehicle tax, from the second time the vehicle is taxed.

For full details please refer to gov.uk/vehicle-tax-rate-tables

Please note: The Autumn Budget 2017 announced that new diesel vehicles registered after 1 April 2018, that do not meet the RDE2 standard will be charged a supplement on their 1st year rate, to the effect of moving up by one VED band. Currently all SEAT diesel engines are affected by this supplement.

26 The new SEAT Leon. Pricing and specification list.

Benefit in kind tax.

How to calculate your liability

The BIK percentage value is based on the CO₂ emissions of the vehicle for the current tax year 2020/21.

BIK calculation example: Leon 5dr SE 1.0 TSI EVO 110PS

P11D value (OTR price less RFL and first registration fee)	£19,855
--	---------

WLTP CO ₂ emissions (g/km)	123
---------------------------------------	-----

Company car BIK tax based on CO ₂ emission level	27%
---	-----

Taxable BIK (for 2020/21 tax year): 27% of £19,625	£5,360.85
---	-----------

Annual Company Car Tax 2020/21 (@20% Income Tax)

20% of £5,360.85	£1,072.17 per annum
------------------	---------------------

Monthly Company Car Tax 2020/21 (@20% Income Tax)

£1,072.17 divided by 12	£89.35 per month
-------------------------	------------------

5dr technical data.

	1.0 TSI EVO 110PS	1.0 eTSI EVO DSG-auto 110PS	1.4 e-HYBRID DSG-auto 204PS	1.5 TSI EVO 130PS	1.5 TSI EVO 150PS	1.5 eTSI EVO DSG-auto 150PS	2.0 TDI 115PS
Engine							
Type (cylinders / valves)	3 / 12	3 / 12	4 / 16	4 / 16	4 / 16	4 / 16	4 / 16
Displacement (cc)	999	999	1395	1498	1498	1498	1968
Bore and stroke (mm)	74.5/76.4	74.5/76.4	74.5/80	74.5/85.9	74.5/85.9	74.5/85.9	81.0/95.5
Compression ratio	11.5	11.5	10	12.5	10.5	10.5	16.0
Maximum power (kW (PS) / rpm) ¹	81 (110) / 5500	81 (110) / 5500	110 (150) / 5000 - 6000	96 (130) / 5000 - 6000	110 (150) / 5000 - 6000	110 (150) / 5000 - 6000	85 (115) / 2750 - 4250
Maximum torque (Nm / rpm)	200 / 2000- 3000	200/ 2000- 3000	250/ 1550- 3500	200 / 1400- 4000	250/ 1500- 3500	250/ 1500- 3500	300 / 1500-2500
Fuel supply system	TSI Direct Injection	TSI Direct Injection	TSI Direct Injection	TSI Direct Injection	TSI Direct Injection	TSI Direct Injection	Direct injection: Common Rail
Fuel type	Unleaded petrol	Unleaded petrol	Unleaded petrol	Unleaded petrol	Unleaded petrol	Unleaded petrol	Diesel
Emission control	RDE 2	RDE 2	RDE 2	EU6D Temp EVAP (RDE1)	EU6D Temp EVAP (RDE1)	EU6D Temp EVAP (RDE1)	EU6D Temp EVAP (RDE1)
Start/stop system	Yes	Yes	Yes	Yes	Yes	Yes	Yes
Energy recovery system	Yes	Yes	Yes	Yes	Yes	Yes	Yes

1. The maximum power output figures are quoted in PS (or Pferdestärke, which is the metric equivalent of horsepower). To convert from metric to imperial horsepower, divide the PS by 1.0139.

AdBlue®.
The use of AdBlue® helps the environment by reducing the number of harmful emissions created by diesel engines. For full details on fuel consumption, CO₂ figures and VED bands (Vehicle Excise Duty) please see page 26.

5dr technical data.

	1.0 TSI EVO 110PS	1.0 eTSI EVO DSG-auto 110PS	1.4 e-HYBRID DSG-auto 204PS	1.5 TSI EVO 130PS	1.5 TSI EVO 150PS	1.5 eTSI EVO DSG-auto 150PS	2.0 TDI 115PS
Electric Engine/Charging System							
Max Power (kw/PS)	-	-	85 (116)	-	-	-	-
Max Torque (nm)	-	-	330	-	-	-	-
Battery type	-	-	Li-ion	-	-	-	-
Battery capacity (ah)	-	-	59	-	-	-	-
Battery capacity (kw/h)	-	-	12,8	-	-	-	-
Battery voltage (v)	-	-	48	-	-	-	-
Battery cells	-	-	96 (8 modules, 12 cells each)	-	-	-	-
Charge type (AC/DC)	-	-	AC	-	-	-	-
Chanrging time AC 2.3kw (10amp) 0-100%	-	-	5hrs 48mins	-	-	-	-
Charging time AC 3.6kw (16amp) 0-100%	-	-	3hrs 42mins	-	-	-	-
Electric Consumption							
Electric consumption combined WLTP (kwh/100km)	-	-	18.1-19.3	-	-	-	-
Electric range WLTP (km)	-	-	64-58	-	-	-	-
Electric range WLTP (miles) based on lowest figure	-	-	36	-	-	-	-
System							
Max power (kw/ps)	-	-	150 (204)	-	-	-	-
Max torque (NM)	-	-	350	-	-	-	-

AdBlue®.
The use of AdBlue® helps the environment by reducing the number of harmful emissions created by diesel engines. For full details on fuel consumption, CO₂ figures and VED bands (Vehicle Excise Duty) please see page 26.

5dr technical data.

	1.0 TSI EVO 110PS	1.0 eTSI EVO DSG-auto 110PS	1.4 e-HYBRID DSG-auto 204PS	1.5 TSI EVO 130PS	1.5 TSI EVO 150PS	1.5 eTSI EVO DSG-auto 150PS	2.0 TDI 115PS
Performance							
Maximum speed (km/h)	197	192	220	210	216	216	201
Maximum speed (mph) ¹	122	119	137	130	134	134	125
Acceleration 0-62mph (s)	10.9	10.8	7.5	9.4	8.4	8.4	10.4
Transmission							
Gearbox type	6-speed manual	6-speed automatic	6-speed automatic	6-speed manual	6-speed manual	7-speed automatic	6-speed manual

1. Where law permits.

AdBlue®.
The use of AdBlue® helps the environment by reducing the number of harmful emissions created by diesel engines. For full details on fuel consumption, CO₂ figures and VED bands (Vehicle Excise Duty) please see page 26.

5dr technical data.

	1.0 TSI EVO 110PS	1.0 eTSI EVO DSG-auto 110PS	1.4 e-HYBRID DSG-auto 204PS	1.5 TSI EVO 130PS	1.5 TSI EVO 150PS	1.5 eTSI EVO DSG-auto 150PS	2.0 TDI 115PS
Fuel consumption¹ (WLTP)							
Combined mpg range	47.1-52.3	45.6-51.4	217.3-235.4	46.3-52.3	44.8-48.7	44.1-48.7	60.1-67.3
Trim & emission (WLTP) CO₂ (g/km)							
SE	123	124	–	124	–	–	111
SE Dynamic	126	128	–	126	–	–	114
FR	125	127	27-30	126	132	133	–
FR First Edition	–	–	28-30	–	–	135	–
FR Sport	–	128	28-30	127	133	134	–
XCELLENCE	–	128	27-30	127	133	134	–
XCELLENCE Lux	–	129	28-30	128	133	134	–
Chassis							
Front suspension	Independent type McPherson, coil springs and hydraulic shock absorber						
Rear suspension	Semi-rigid axle, coil springs and hydraulic shock absorber						
Steering system	R-EPS (Rack Electric Power System)						
Turning circle diameter [wall to wall] [m]	10,5 / 11,2 [between walls]						
Braking system							
Anti-lock Braking System (ABS)	Dual hydraulic circuit and brake system diagonal split with brake booster						
Type (front/rear)	Front ventilated disc brakes and rear solid disc brakes						
Front discs [mm]	276x24	288 x 25	312x25	288 x 25	288 x 25	288 x 25	288 x 25
Rear discs [mm]	272 x 10	272 x 10	272 x 10	272 x 10	272 x 10	272 x 10	272 x 10

1. Figures shown are for comparability purposes; only compare fuel consumption and CO₂ figures with other vehicles tested to the same technical procedures. These figures may not reflect real life driving results, which will depend upon a number of factors including the accessories fitted [post-registration], variations in weather, driving styles and vehicle load. Data correct at 01/10/2020.

AdBlue®.

The use of AdBlue® helps the environment by reducing the number of harmful emissions created by diesel engines. For full details on fuel consumption, CO₂ figures and VED bands (Vehicle Excise Duty) please see page 26.

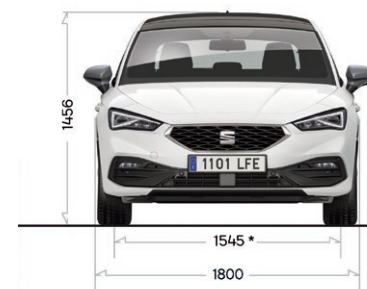
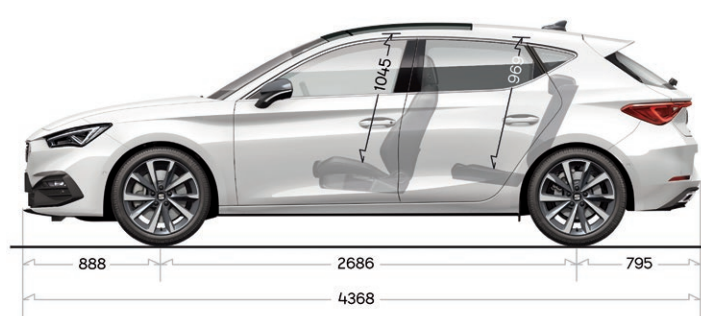
30 The new SEAT Leon. Pricing and specification list.

5dr technical data.

	1.0 TSI EVO 110PS	1.0 eTSI EVO DSG-auto 110PS	1.4 e-HYBRID DSG-auto 204PS	1.5 TSI EVO 130PS	1.5 TSI EVO 150PS	1.5 eTSI EVO DSG-auto 150PS	2.0 TDI 115PS
Weights							
Kerb weight [with driver] (kg)	1279	1330	1614	1318	1330	1361	1415
Permissible gross weight (kg)	1750	1860	2060	1860	1870	1900	1950
Max. towing weight without brake (kg)	630	660	750	650	660	680	700
Max. towing weight with brake 8% (kg)	1500	1500	1700	1700	1700	1700	1800
Max. towing weight with brake 12% (kg)	1300	1300	1500	1400	1500	1500	1500

Dimensions Leon 5dr

Boot capacity (l)	380	380	270	380	380	380	380
Fuel tank capacity (l)	50	50	40	50	50	50	50



Estate technical data.

	1.4 e-HYBRID DSG-auto 204PS	1.5 TSI 130PS	1.5 TSI 150PS	1.5 eTSI DSG-auto 150PS
Engine				
Type (cylinders / valves)	4 / 16	4 / 16	4 / 16	4 / 16
Displacement (cc)	1395	1498	1498	1498
Bore and stroke (mm)	74.5 / 80	74.5 / 85.9	74.5 / 85.9	74.5 / 85.9
Compression ratio	10	12.5	10.5	10.5
Maximum power (kW (PS) / rpm) ¹	110 (150) / 5000 - 6000	96 (130) / 5000 - 6000	110 (150) / 5000 - 6000	110 (150) / 5000 - 6000
Maximum torque (Nm / rpm)	250/ 1550- 3500	200 / 1400- 4000	250/ 1500- 3500	250/ 1500- 3500
Fuel supply system	TSI Direct Injection	TSI Direct Injection	TSI Direct Injection	TSI Direct Injection
Fuel type	Unleaded petrol	Unleaded petrol	Unleaded petrol	Unleaded petrol
Emission control	RDE 2	EU6D Temp EVAP (RDE1)	EU6D Temp EVAP (RDE1)	EU6D Temp EVAP (RDE1)
Start/stop system	Yes	Yes	Yes	Yes
Energy recovery system	Yes	Yes	Yes	Yes

1. The maximum power output figures are quoted in PS (or Pferdestärke, which is the metric equivalent of horsepower). To convert from metric to imperial horsepower, divide the PS by 1.0139.

AdBlue®.
The use of AdBlue® helps the environment by reducing the number of harmful emissions created by diesel engines. For full details on fuel consumption, CO₂ figures and VED bands (Vehicle Excise Duty) please see page 26.

Estate technical data.

	1.4 e-HYBRID DSG-auto 204PS	1.5 TSI 130PS	1.5 TSI 150PS	1.5 eTSI DSG-auto 150PS
Electric Engine/Charging System				
Max Power (kw/PS)	85 [116]	-	-	-
Max Torque (nm)	330	-	-	-
Battery type	Li-ion	-	-	-
Battery capacity (ah)	48	-	-	-
Battery capacity (kw/h)	59	-	-	-
Battery voltage (v)	12,8	-	-	-
Battery cells	96 [8 modules, 12 cells each]	-	-	-
Charge type [AC/DC]	AC	-	-	-
Chanrging time AC 2.3kw [10amp] 0-100%	5hrs 48mins	-	-	-
Charging time AC 3.6kw [16amp] 0-100%	3hrs 42mins	-	-	-
Electric Consumption				
Electric consumption combined WLTP (kwh/100km)	18.1	-	-	-
Electric range WLTP (km)	63-58	-	-	-
Electric range WLTP (miles) based on lowest figure	36	-	-	-
System				
Max power (kw/ps)	150 [204]	-	-	-
Max torque (NM)	350	-	-	-

AdBlue®.
The use of AdBlue® helps the environment by reducing the number of harmful emissions created by diesel engines. For full details on fuel consumption, CO₂ figures and VED bands (Vehicle Excise Duty) please see page 26.

Estate technical data.

	1.4 e-HYBRID DSG-auto 204PS	1.5 TSI 130PS	1.5 TSI 150PS	1.5 eTSI DSG-auto 150PS
Performance				
Maximum speed (km/h)	220	213	217	217
Maximum speed (mph) ¹	137	132	135	135
Acceleration 0-62mph (s)	7.7	9.7	8.8	8.7
Transmission				
Gearbox type	6-speed automatic	6-speed manual	6-speed manual	7-speed automatic

1. Where law permits.

AdBlue®.
The use of AdBlue® helps the environment by reducing the number of harmful emissions created by diesel engines. For full details on fuel consumption, CO₂ figures and VED bands (Vehicle Excise Duty) please see page 26.

Estate technical data.

	1.4 e-HYBRID DSG-auto 204PS	1.5 TSI 130PS	1.5 TSI 150PS	1.5 eTSI DSG-auto 150PS
Fuel consumption¹ (WLTP)				
Combined mpg range	217.3-235.4	46.3-51.4	44.1-47.9	44.1-47.9
Trim & emission (WLTP) CO₂ (g/km)				
SE	–	124	–	–
SE Dynamic	–	127	–	–
FR	27-30	127	133	133
FR Sport	28-30	128	134	134
XCELLENCE	28-30	128	134	134
XCELLENCE Lux	28-30	127	134	134
Chassis				
Front suspension	Independent type McPherson, coil springs and hydraulic shock absorber			
Rear suspension	Semi-rigid axle, coil springs and hydraulic shock absorber			
Steering system	R-EPS (Rack Electric Power System)			
Turning circle diameter [wall to wall] [m]	10,5 / 11,2 (between walls)			
Braking system				
Anti-lock Braking System (ABS)	Dual hydraulic circuit and brake system diagonal split with brake booster			
Type (front/rear)	Front ventilated disc brakes and rear solid disc brakes			
Front discs [mm]	312 x 25	288 x 25	288 x 25	288 x 25
Rear discs [mm]	272 x 10	272 x 10	272 x 10	272 x 10

1. Figures shown are for comparability purposes; only compare fuel consumption and CO₂ figures with other vehicles tested to the same technical procedures. These figures may not reflect real life driving results, which will depend upon a number of factors including the accessories fitted [post-registration], variations in weather, driving styles and vehicle load. Data correct at 01/10/2020.

AdBlue®.

The use of AdBlue® helps the environment by reducing the number of harmful emissions created by diesel engines. For full details on fuel consumption, CO₂ figures and VED bands (Vehicle Excise Duty) please see page 26.

Estate technical data.

	1.4 e-HYBRID DSG-auto 204PS	1.5 TSI 130PS	1.5 TSI 150PS	1.5 eTSI DSG-auto 150PS
Weights				
Kerb weight [with driver] (kg)	1658	1362	1374	1410
Permissible gross weight (kg)	2080	1960	1960	2000
Max. towing weight without brake (kg)	750	680	680	700
Max. towing weight with brake 8% (kg)	1700	1700	1700	1700
Max. towing weight with brake 12% (kg)	1500	1400	1500	1500

Dimensions Leon Estate

Boot capacity (l)	470	620	620	620
Fuel tank capacity (l)	40	50	50	50



Warranties & service plans.

☐ Optional

Extended Warranties		All trims	Basic price	VAT @ 20%	Recommended retail price
When you buy a new SEAT it is covered by a 3 year/60,000 miles manufacturer warranty. You can extend this cover, with a 4 year/75,000 miles or 5 year/90,000 miles SEAT Extended Manufacturer Warranty, and get the same level of cover. It is fully transferable to a new owner if you decided to sell your SEAT.	4 years/75,000 miles	<input type="checkbox"/>	£225.00	£45.00	£270.00
Please note: The SEAT Extended Manufacturer Warranty is only available at the time of ordering a new SEAT.	5 years/90,000 miles	<input type="checkbox"/>	£375.00	£75.00	£450.00

Extended Warranty for existing owners: If your existing warranty is about to expire, or if you haven't already got one in place, our Extended Warranty* is designed to protect you. For a quote, visit insurewithseat.co.uk

*SEAT Financial Services is a trading name of Volkswagen Financial Services (UK) Limited. SEAT Extended Warranty is sold and administered by Lawshield UK and underwritten by Volkswagen Versicherung AG. Terms, conditions, and eligibility criteria apply.

Service plan		All trims	Upfront payment	or	Monthly cost
New Fixed Price Service Plans are available for cars up to 12 months. You always know where you are with our fixed price plans which are inflation proof. Available at participating SEAT Retailers.	Includes 1st and 2nd service	<input type="checkbox"/>	£398.16		24 monthly payments of £16.59
Go to seat.co.uk/bookservice					
Prices are subject to change.					

The SEAT Warranty

Three-year Warranty.

All new SEATs registered in the UK come with a three year/60,000 miles warranty, which protects your car against the failure of most mechanical and electrical components due to manufacturing defects. This comprises a two-year manufacturer's warranty with unlimited mileage plus a further one-year/60,000 (whichever is soonest).

Retailer Warranty.

Should the mileage exceed 60,000 miles within the first two years, the manufacturer's two-year warranty will still be valid. If an additional warranty for subsequent years or higher mileage is desired, it may be purchased from an authorised SEAT Retailer or repairer, however, this additional warranty must be purchased before the mileage reaches 60,000. Cover is subject to the car being serviced and maintained according to the manufacturer's technical guidelines.

Full details of the three-year warranty are available from your SEAT Retailer or repairer.

Warranties & service plans.

SEAT Extended Manufacturer Warranty

If you take out a SEAT Extended Manufacturer Warranty before your new car is registered, you'll get exactly the same level of cover as the three year warranty, but for up to five years. You can choose a SEAT Extended Manufacturer Warranty to last until the end of the 4th year/up to 75,000 miles or until the end of the 5th year/up to 90,000 miles (whichever is soonest). Please note: SEAT Extended Manufacturer Warranty products are only available at the time of ordering your new SEAT.

Battery warranty

SEAT guarantees 8 years of battery lifetime and/or 100,000 miles driving distance. Therefore the battery capacity will not fall below 70%.

Three-year Paint Warranty

The paintwork of all models featured in this price list is covered against manufacturing defects for a period of three years. Naturally, the vehicle must be cared for in compliance with the operating instructions which will be found in your vehicle handbook. Please consult your authorised SEAT Retailer or repairer for full warranty details.

Twelve-year Body Protection Warranty

The internal body sections and panels of the models featured in this price list are covered against rusting through from the outside for twelve years.

Naturally, the vehicle must be cared for in compliance with the operating instructions which will be found in your vehicle handbook. Please consult your authorised SEAT Retailer or repairer for full warranty details.

SEAT Parts Warranty

SEAT parts and accessories supplied after new vehicle delivery are covered by our 24 months parts warranty.

SEAT Car Insurance

Complimentary drive away cover

We want you to start enjoying your car from day one, and with our 5 day Drive Away Insurance you can. Our comprehensive cover is designed specifically for SEAT drivers, and offers many features and benefits as standard. To activate, simply call 0345 246 3519. If you are eligible, we will also provide you with an annual quotation giving you the option to purchase 12 months cover. Subject to eligibility. Five day drive away insurance cannot be used in conjunction with any other insurance offer.

Annual Car Insurance

If you take out a new SEAT Car Insurance* policy, you will receive the following benefits as standard:

- SEAT Approved Repairs carried out by SEAT Approved technicians using only Genuine Parts and Paints
- Guaranteed courtesy car
- Windscreen cover

- Uninsured driver promise
- 24hr accident recovery
- Personal accident cover
- Personal belongings cover
- Child seat replacement

For more information or to get a quote, please visit insurewithseat.co.uk or alternatively call us on 0345 877 6555. We're available Monday to Friday 8am-8pm and Saturday 9am-5pm.

SEAT Roadside Assistance (including European cover)

Any new SEAT purchased and registered in the UK from an authorised SEAT Retailer, is covered free by SEAT Assistance (including European cover) for roadside repairs or recovery to an authorised repairer for a term of two years. Terms and conditions apply.

Specifications

Specifications refer to Model Year 2020. While SEAT makes every effort to make sure that specifications are accurate at time of going to press (10/2020), you should always check details with your SEAT Retailer as there may have been changes in view of SEAT's policy of continuous product improvement. The right is reserved to change specification and colour at any time. The information in this price list can therefore be given as guidance only.

*SEAT Car Insurance is underwritten by U K Insurance Limited. Registered Office: The Wharf, Neville Street, Leeds LS1 4AZ. Registered in England and Wales No. 1179980. U K Insurance Limited is authorised by the Prudential Regulation Authority and regulated by the Financial Conduct Authority and the Prudential Regulation Authority. Calls may be recorded. SEAT Financial Services is a trading name of Volkswagen Financial Services (UK) Limited ("VWFS UK"), registered in England and Wales No.2835230 (registered office: Brunswick Court, Yeomans Drive, Blakelands, Milton Keynes MK14 5LR). Volkswagen Insurance Service (Great Britain) Ltd is an appointed representative of VWFS UK. VWFS UK is authorised and regulated by the Financial Conduct Authority, registration number 311988. Authorisation details for both organisations can be checked on the Financial Services Register by visiting fca.org.uk. VWFS UK and U K Insurance Limited are not part of the same corporate group.



SEAT is committed to a policy of continuous product development and reserves the right to make changes to specifications, colours and prices without notice. The information in this brochure can therefore be given as guidance only. While SEAT makes every effort to ensure that specifications are accurate at the time of publication, you should always check with your authorised SEAT Partner for the latest information. Due to limitations of the printing process the colours reproduced in this brochure may vary slightly from the actual paint colour and material. This vehicle and all its parts, as well as the original spares, were designed according to the Legal Regulations governing the prevention and minimisation of Environmental Impact, through the use of recycled/recyclable materials, with measures taken to achieve suitable recycling for the conservation and improvement of environmental quality.

10/2020 Published in the UK.

seat.co.uk