

## **SEAT Leon TDi Heater Matrix replacement.**

Time: 2-3 hours

This information has been collated from other sources (You Tube), members of the Seatcupra.net forum and personal experience.

### **Parts**

**Heater Matrix** - use your reg number on parts sites to lookup what matrix you need. Buycarparts and Autodoc are quite good.

Valeo – standard original part.

Nissen – allegedly have wider channels and less likely to block up.

[https://www.buycarparts.co.uk/search?keyword=715303&maker\\_id=104&model\\_id=11484&car\\_id=23695&kbaStr%5B0%5D=YE14WMM](https://www.buycarparts.co.uk/search?keyword=715303&maker_id=104&model_id=11484&car_id=23695&kbaStr%5B0%5D=YE14WMM)

**Header/Expansion Tank** – pre-facelift seems to have the silicate `tea bag` visible and can be removed with long nose pliers. If the bag is intact, that is good. If it has split, there is likely to be more goo in your system. Newer vehicles seem to have a double walled tank and the bag is not visible or accessible without destroying the tank.

It is highly advisable to also change the header tank at the same time as the matrix. You can buy tanks with no silicate bag. Make sure that the new tank has a lid as well (a lot do not). This is because the pressure release valve in your current tank has been overworked by the overheat/overpressure issues and may not work properly. You do not want to reuse it. The tank literally takes 15 mins to swap out.

### **Matrix Installation**

You Tube Video – watch, take notes and get going.

<https://youtu.be/Ue7KP4U1xaQ>

### **Extra tips:**

Line the footwell with thick plastic sheeting and then have some towels and kitchen towel ready. You WILL spill some coolant, although only about 300ml actually comes out of the matrix (it's the smallest of the 3 coolant circuits).

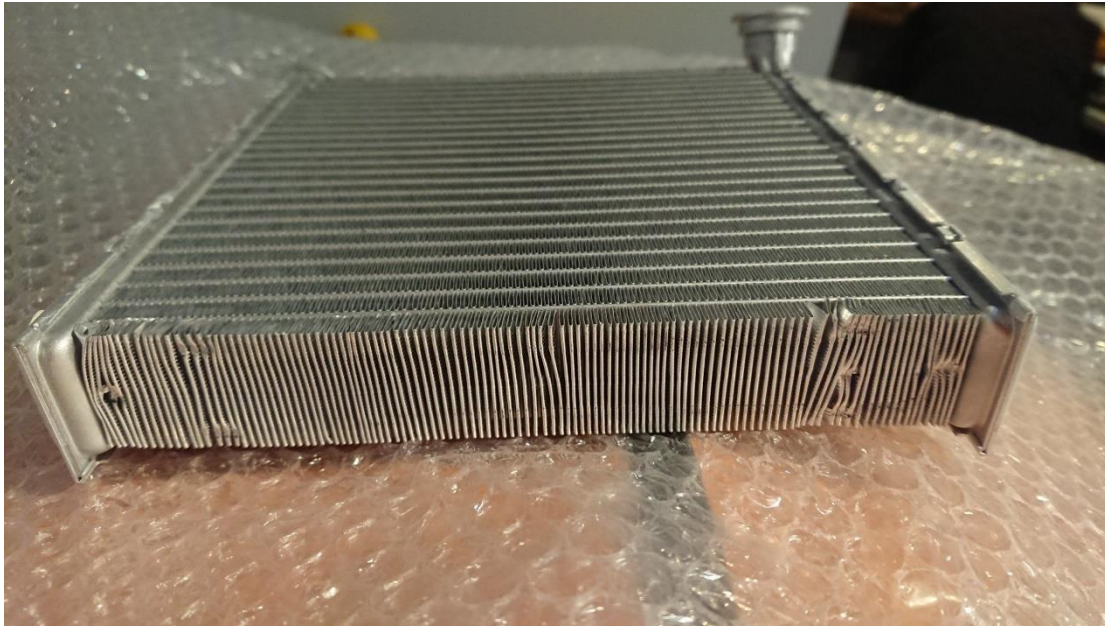


There are 3 screws holding the blower motor in place. The one at the back is hard to get to, so a short T25 (or whatever size it is) on a small ratchet works best. Anything longer is hard to fit in the footwell and get any purchase on the screw.

When you remove the glovebox/multimedia unit - label all of the wires and remember (write down) what order things came out. There is a footwell light and glovebox light and it's easy to forget what goes where.

*Note: some people may say that you do not need to remove the blower and glovebox – it is far easier if you do and worth the effort.*

Also be careful when sliding in the new matrix. The alloy fins are very fragile and easy to damage. Just be patient and take your time. Don't force it if it doesn't feel right.



When you re-attach the pipes to the matrix - on the lower pipe make sure that the pipe is fully located and the retaining collar on the back is fully engaged and clips on to the back properly, otherwise it will leak a little (there is a small lip and it need to sit over that). You can barely tell the difference. If it is not located properly, it will leak under pressure. The best advice is take a photo BEFORE you remove the pipe and ensure that it goes back on the same way.



### **Coolant System Flushing**

Ideally, you want to change out as much contaminated coolant as possible. The easiest DIY way to do this is drop off the bottom/main radiator hose. As the car has 3 coolant circuits, you'll struggle to get everything out. The coolant circuit on the car is quite complex and you need special VAG tools to fully flush/bleed it.

Just get as much as you can out. Some people suggest putting deionised water through to help flush out any contaminants. Also bear in mind that your coolant will need changing every few years (like the good old days) as it will not have the silicate bag to help top up the anti-corrosion properties.

### **Topping up coolant**

The system will have some air pockets in it and it may `gurgle` a little, especially when you switch off the car when warm the first few times. The system does self-bleed. When the car is cold, check coolant levels and top up if needed. After a few drives and top-ups, it will sort itself out.

That's about it.

Good luck.